

# November 2024: Active Monitoring Program

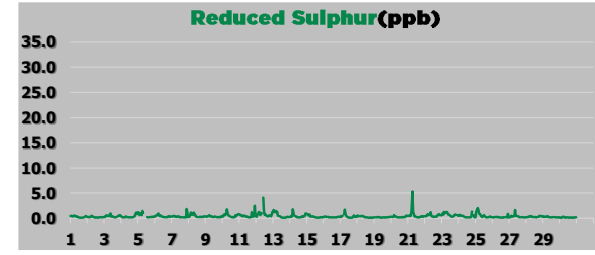
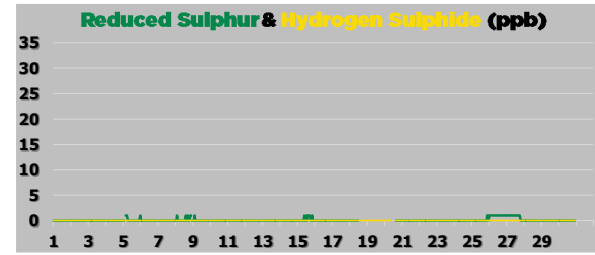
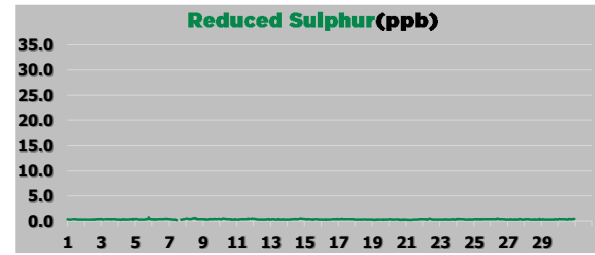
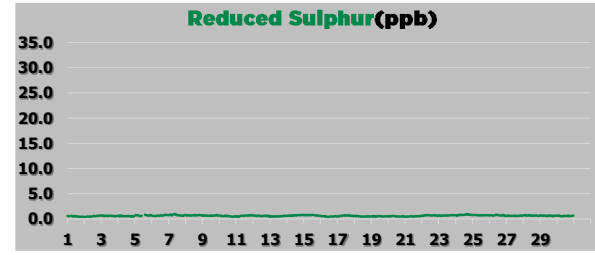
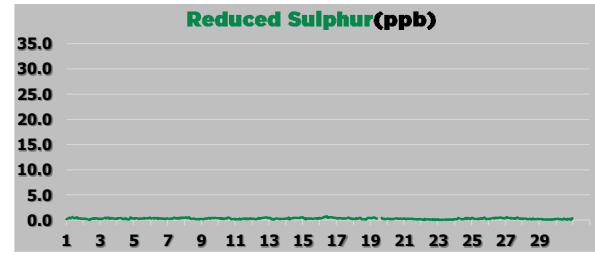
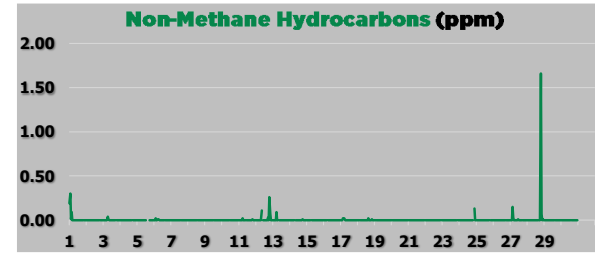
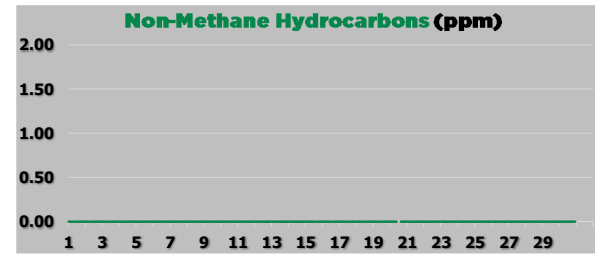
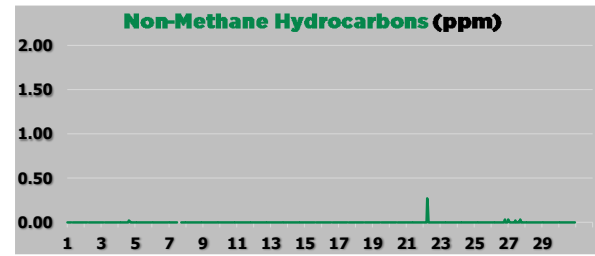
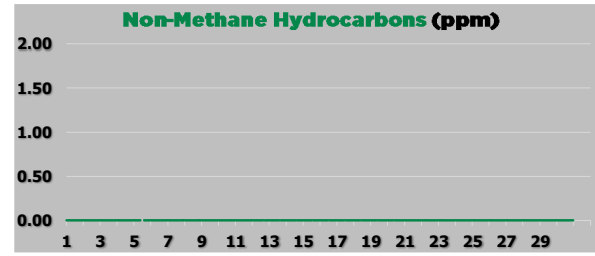
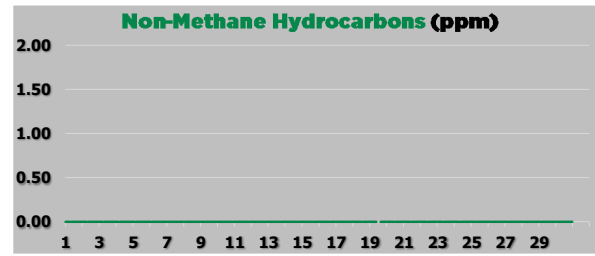
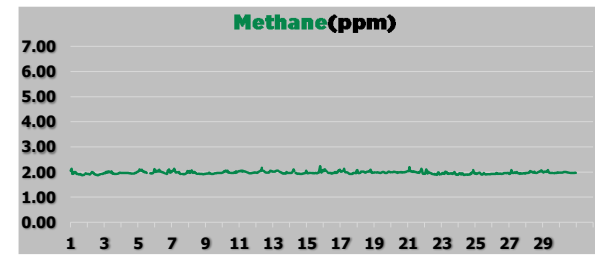
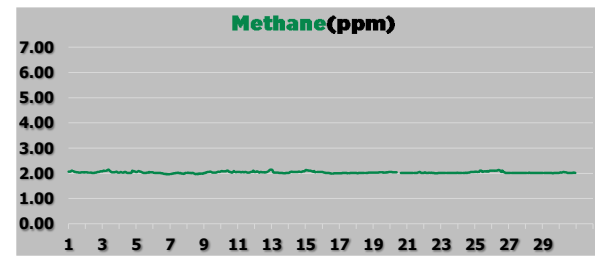
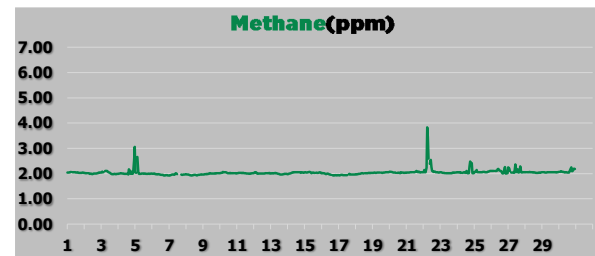
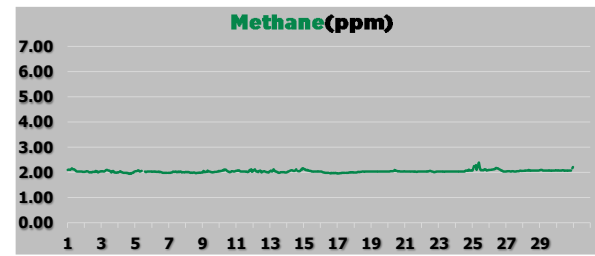
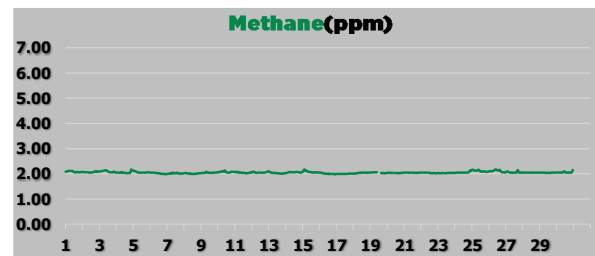
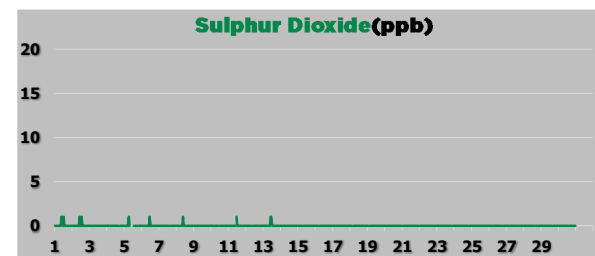
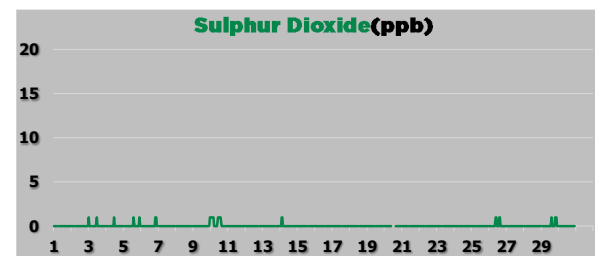
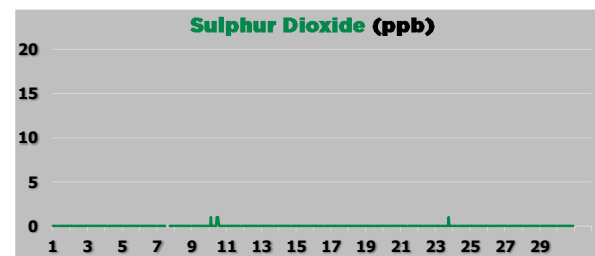
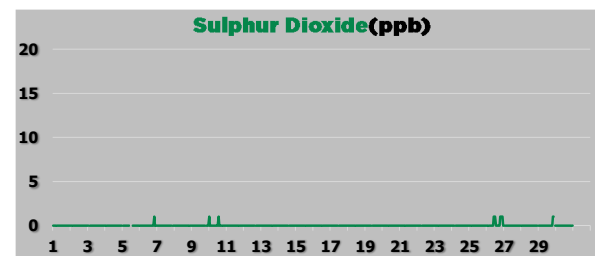
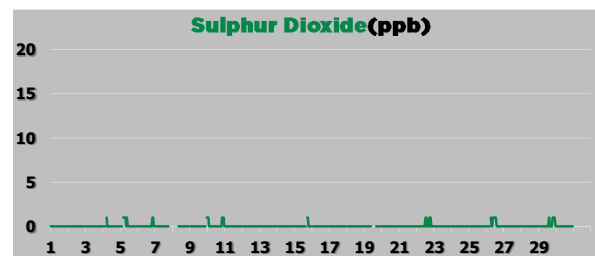
## 986-C Station

## 842-B Station

## Reno-B Station

## PRC Station

## AQHI Station - Grimshaw



### Field Operations Summary (detailed field operations notes can be found in the monthly technical reports on the PRAMP [website](#))

#### 986-C Station

- SO<sub>2</sub>: Data collected between November 7 at hour 19 and November 8 at hour 6 were lost due to a communications error. The datalogger was reset to correct the issue. A successful repeat zero-span check was initiated to confirm the analyzer's functionality. Thirteen hours of downtime were recorded due to this event.

#### 842-B Station

- No major operational issues this month.

#### Reno-B Station

- No major operational issues this month.

#### PRC Station

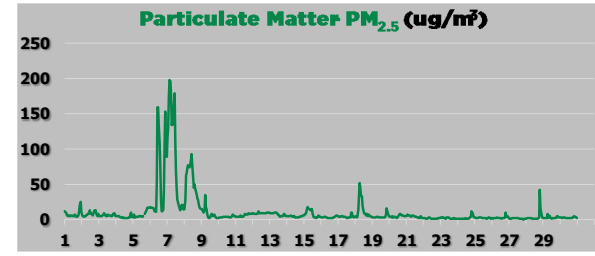
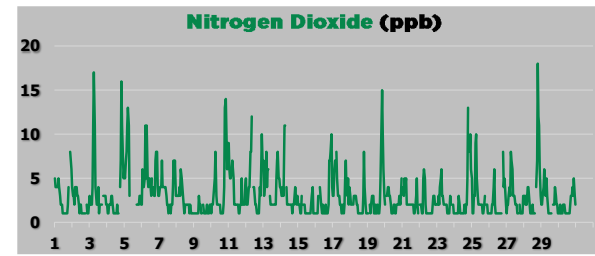
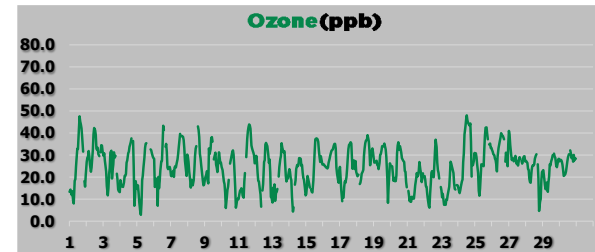
- SO<sub>2</sub>: The analyzer failed the daily span check on November 9 due to permeation tube depletion. The permeation tube was replaced on November 16. A new expected span value was entered on November 18. Data quality was not compromised due to this event.
- TRS: The analyzer failed the daily span check on November 19. A successful shut-down calibration was completed on November 19 before the scrubber material was replaced. The analyzer was allowed to stabilize overnight. A post-repair calibration was completed on November 20. Data were invalidated back to the last valid zero-span check, which was November 18 at hour 13. Forty-four hours of downtime were recorded due to this event.

#### AQHI Station - Grimshaw

- No major operational issues this month.

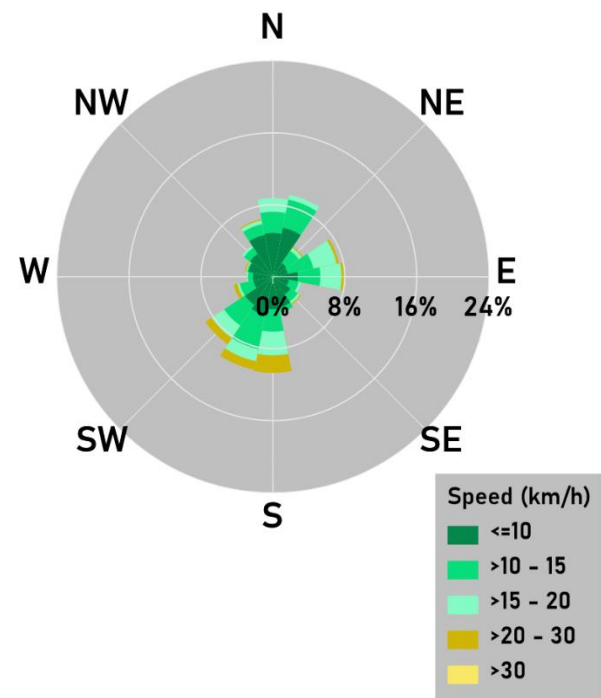
#### NMHCs Canister Sampling Program

- One NMHC canister event was recorded on November 22, at 5:00 am with a trigger concentration of 0.33 ppm.

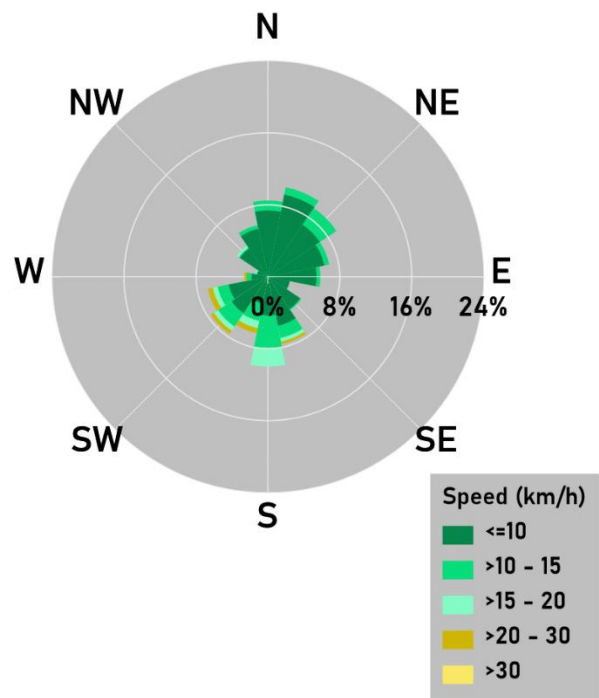


# November 2024: Active Monitoring Program

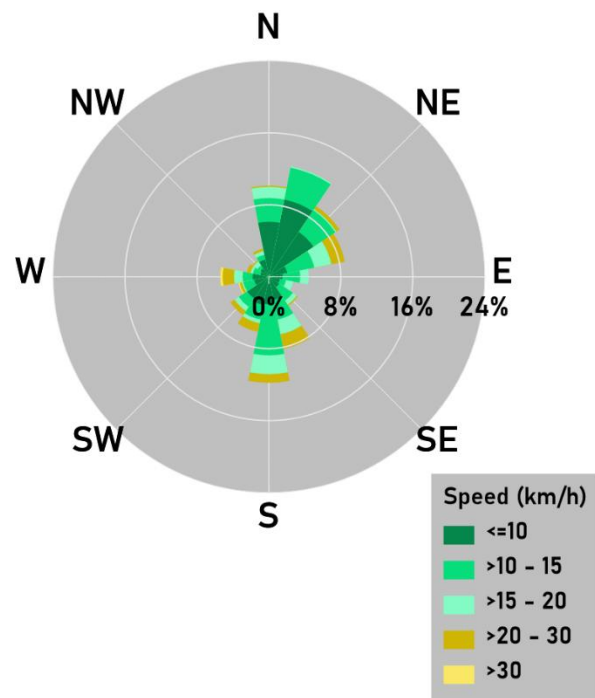
### 986-C Station



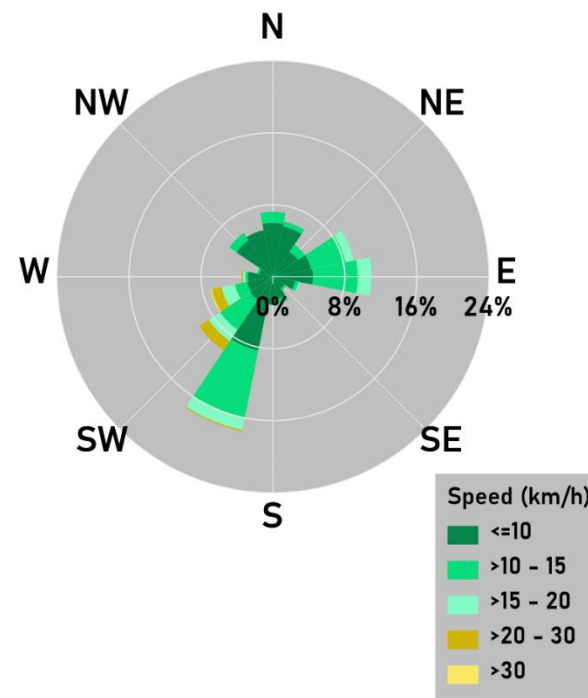
### 842-B Station



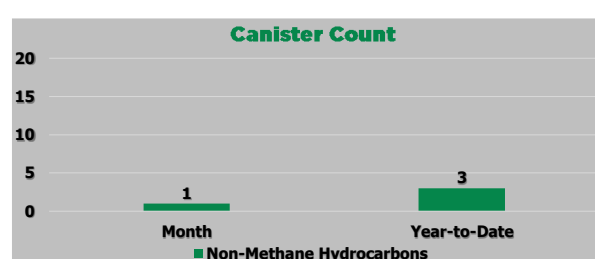
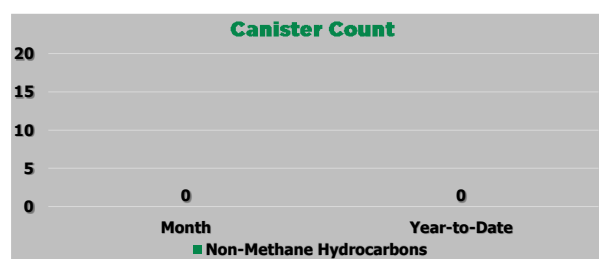
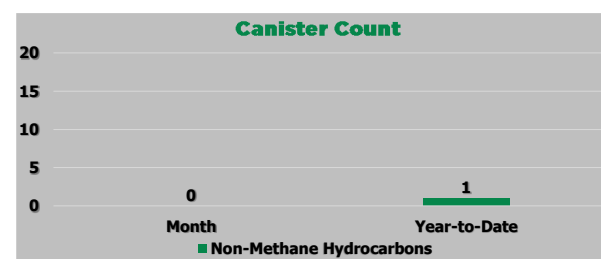
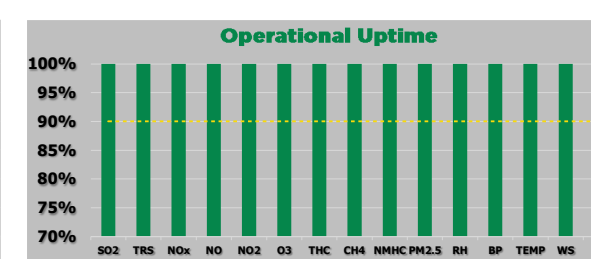
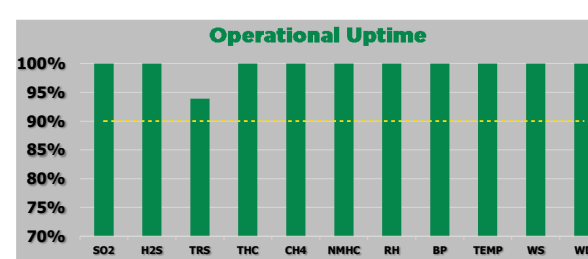
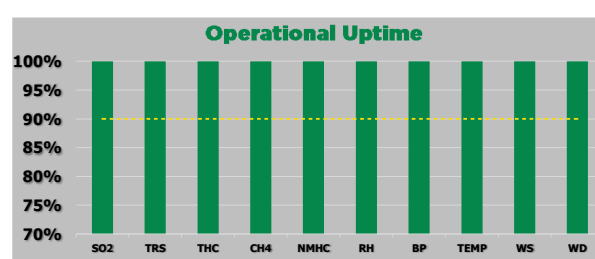
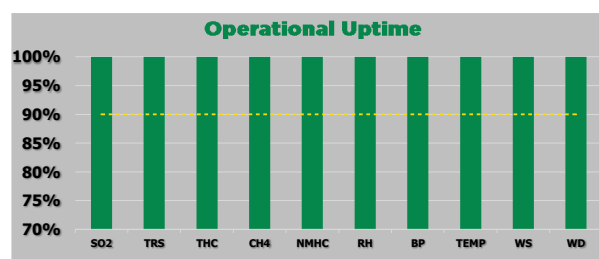
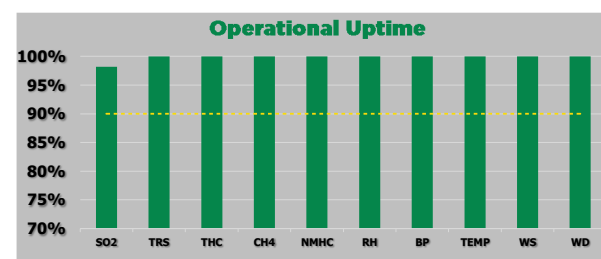
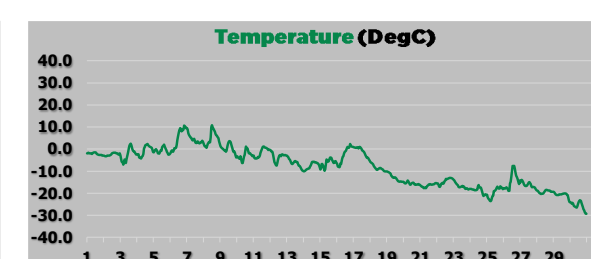
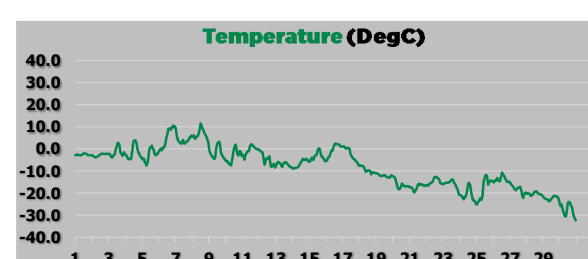
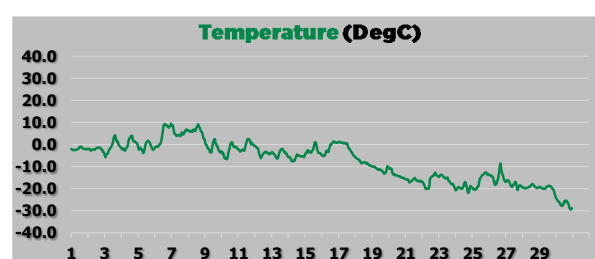
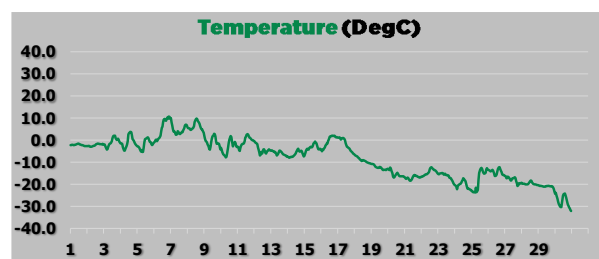
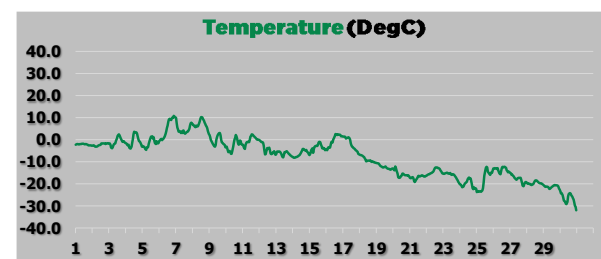
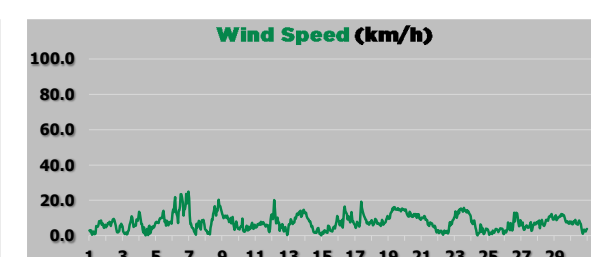
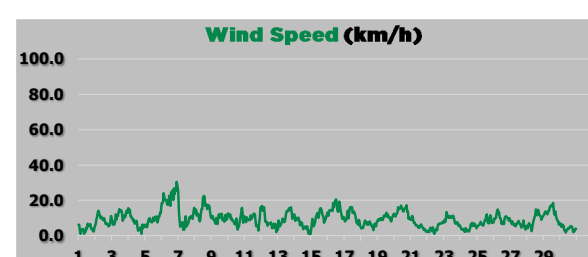
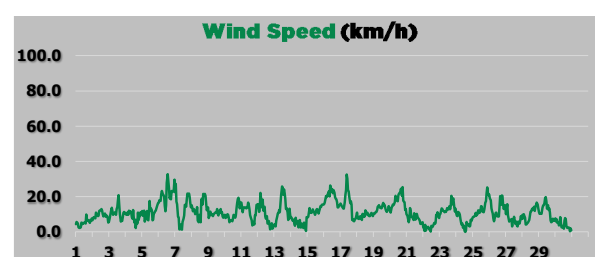
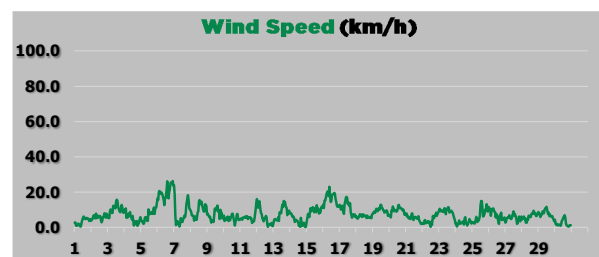
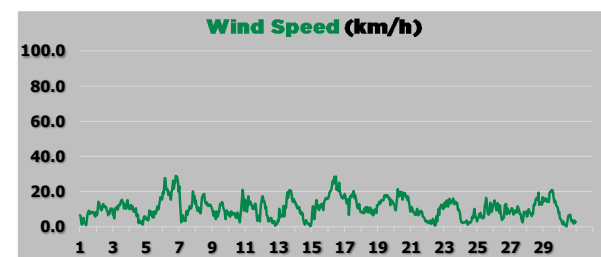
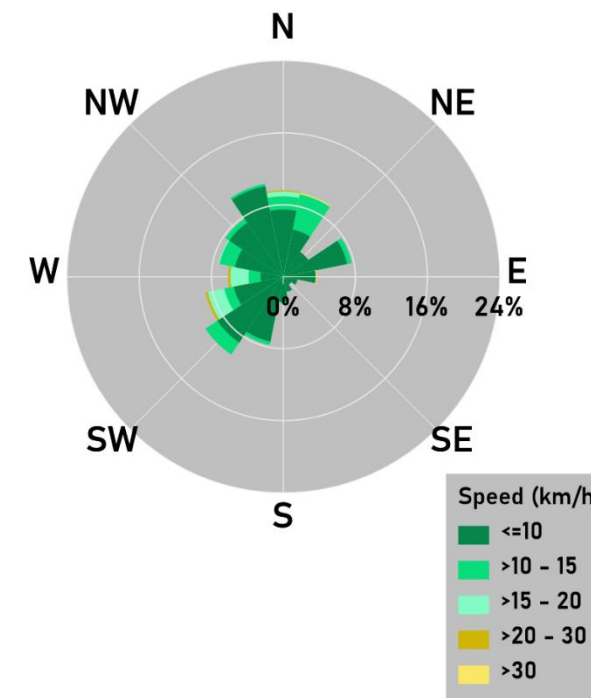
### Reno-B Station



### PRC Station



### AQHI Station - Grimshaw



**Targets, Guidelines, and Objectives**  
 Sulphur Dioxide 1h AAAQO = 172 ppb  
 Ozone 1h AAAQO = 76 ppb  
 Particulate Matter (PM<sub>2.5</sub>) 1h AAAQO = 80 ug/m<sup>3</sup>  
 Nitrogen Dioxide 1h AAAQO = 159 ppb  
 Operational Uptime Requirement = 90%  
 AQHI Risk Value = 1-3 Low, 4-6 Moderate, 7-10 High, >10 Very High

