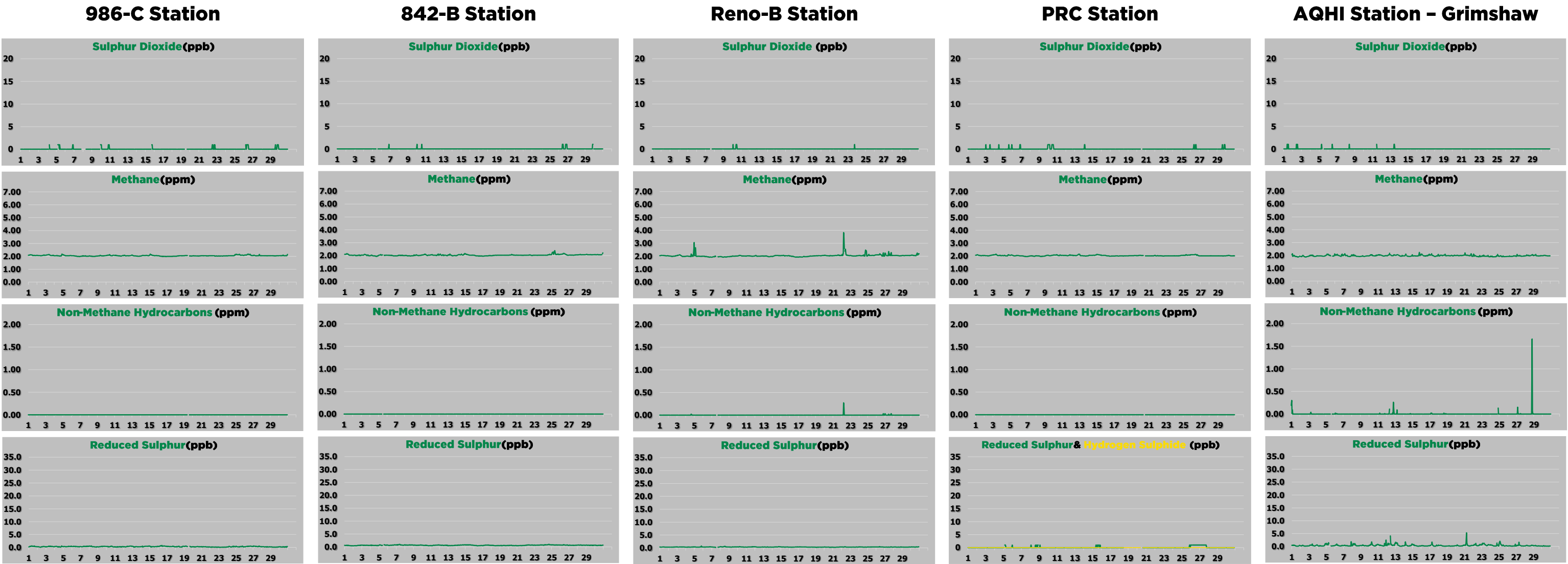


# November 2024: Active Monitoring Program



**Field Operations Summary** (detailed field operations notes can be found in the monthly technical reports on the [PRAMP website](#))

986-C Station

- SO2: Data collected between November 7 at hour 19 and November 8 at hour 6 were lost due to a communications (telemetry) error. The datalogger was reset to correct the issue. A successful repeat zero-span check was initiated to confirm the analyzer’s functionality. Thirteen hours of downtime were recorded due to this event.

842-B Station

- No major operational issues this month.

Reno-B Station

- No major operational issues this month.

PRC Station

- TRS: The analyzer failed the daily span check on November 19. A successful shut-down calibration was completed on November 19 before the scrubber material was replaced. The analyzer was allowed to stabilize overnight. A post-repair calibration was completed on November 20. Data were invalidated back to the last valid zero-span check, which was November 18 at hour 13. Forty-four hours of downtime were recorded due to this event.

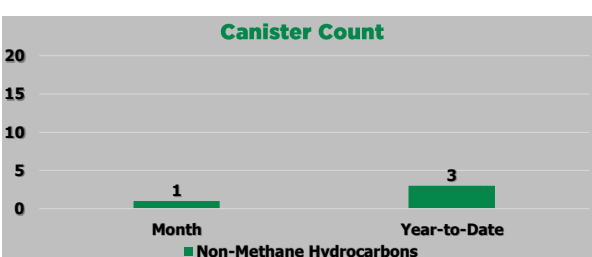
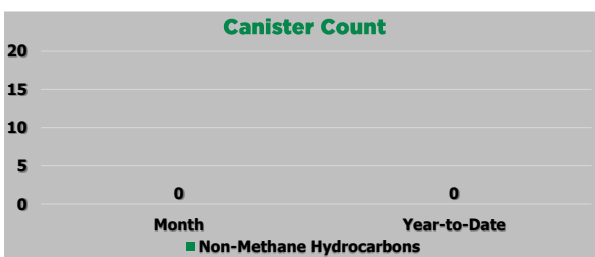
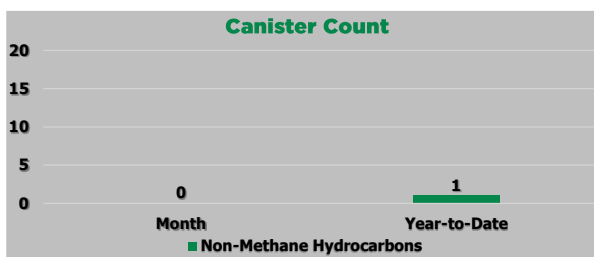
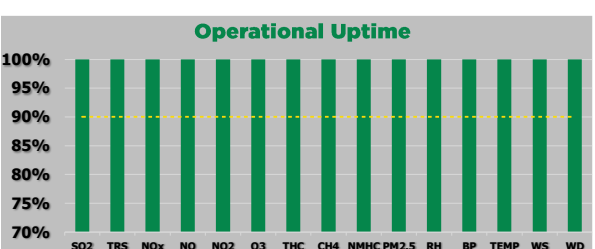
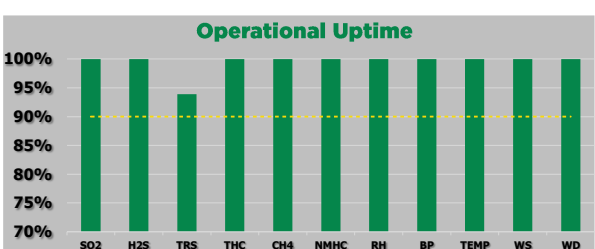
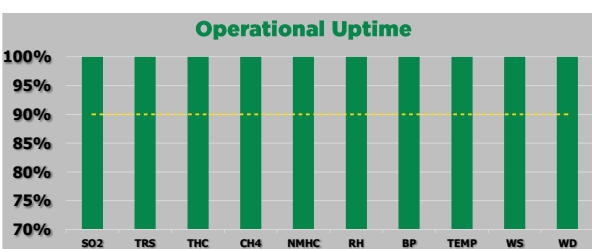
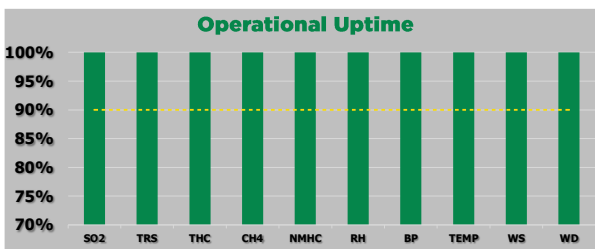
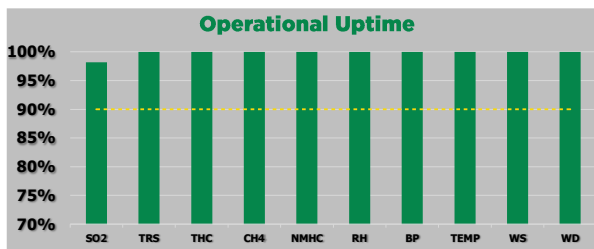
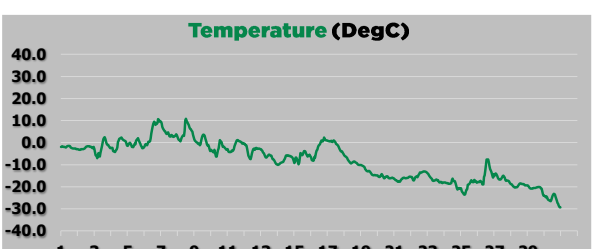
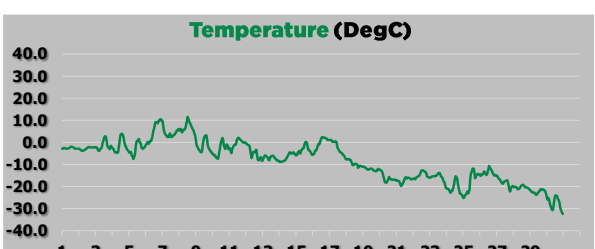
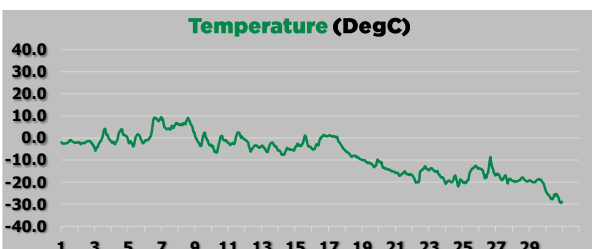
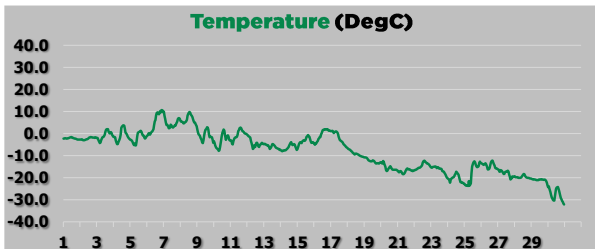
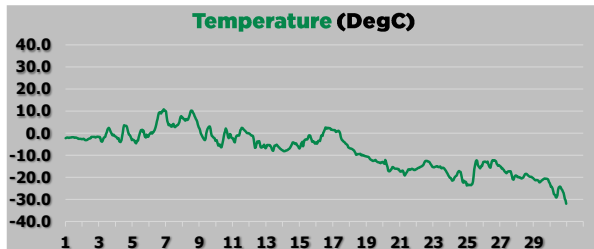
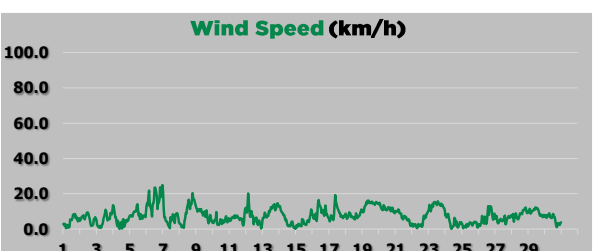
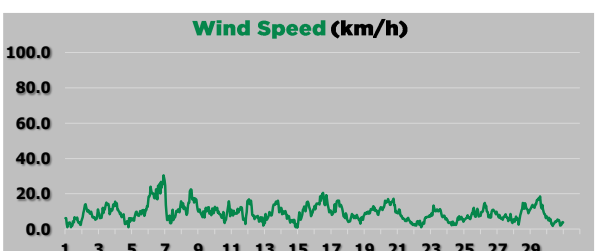
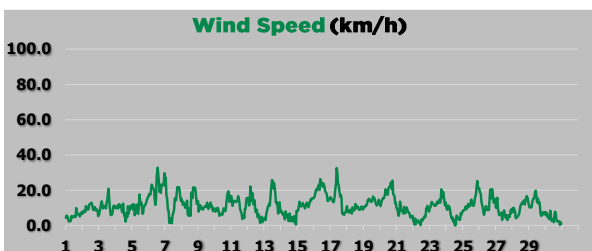
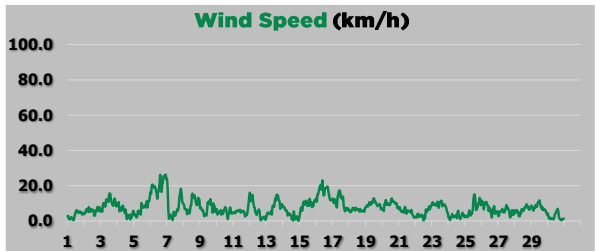
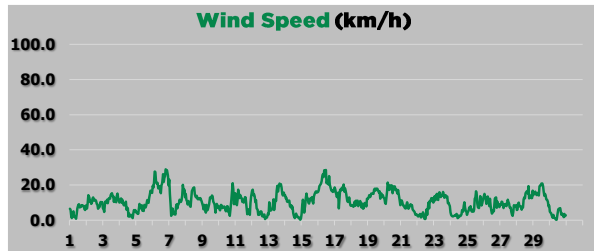
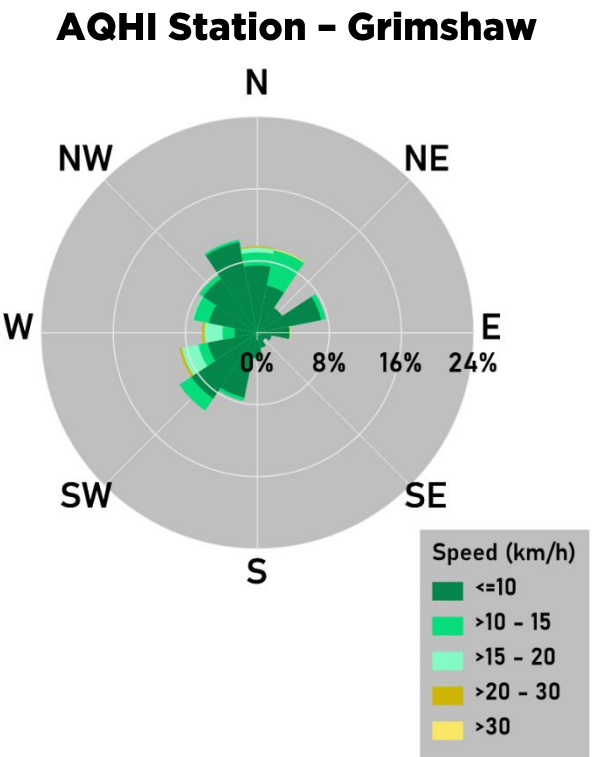
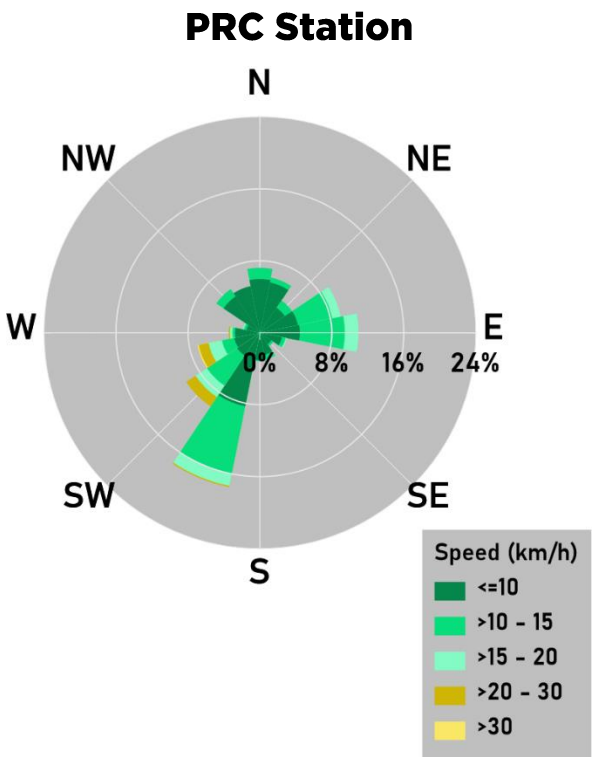
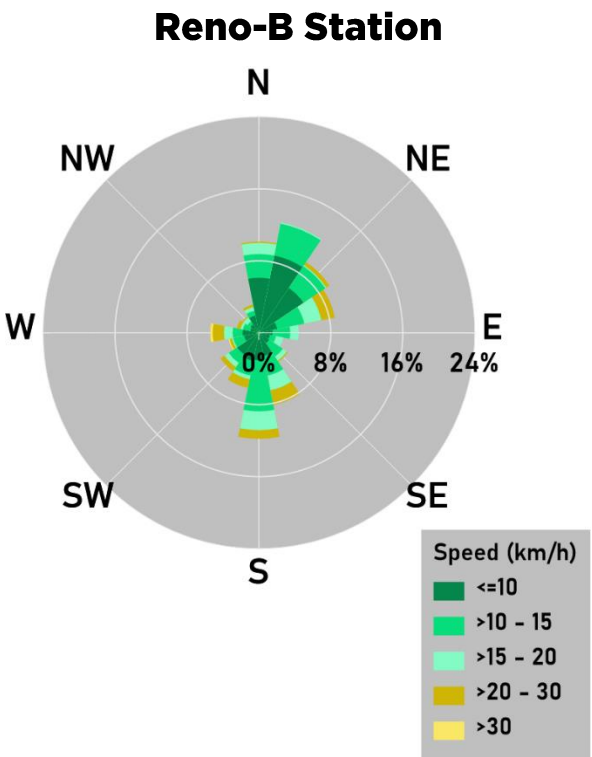
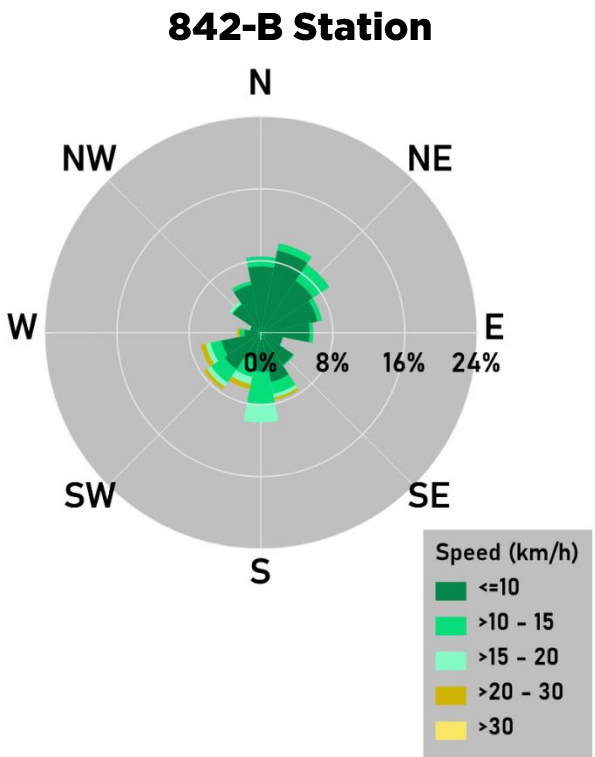
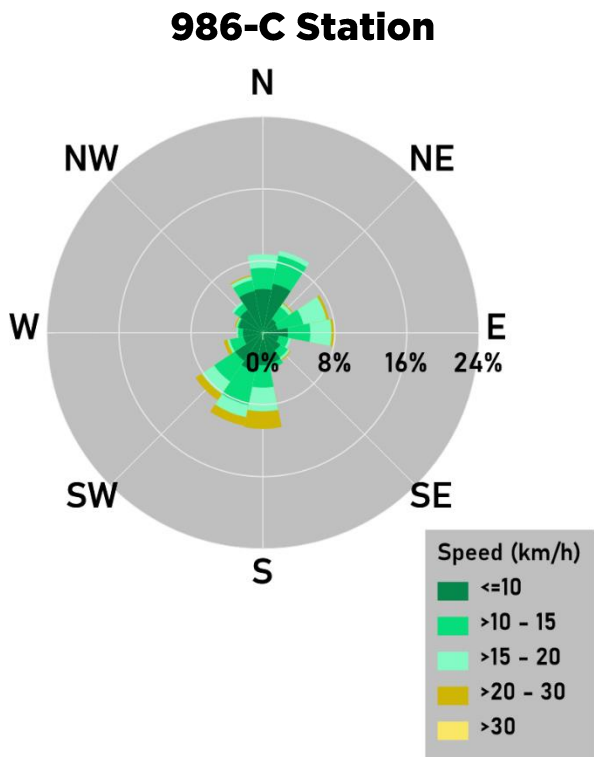
AQHI Station – Grimshaw

- No major operational issues this month.

NMHCs Canister Sampling Program

- One NMHC canister event was recorded on November 22, at 5:00 am at the Reno-B Station with a trigger concentration o 0.33 ppm.

# November 2024: Active Monitoring Program



#### Targets, Guidelines, and Objectives

Sulphur Dioxide 1h AAAQO = 172 ppb  
Ozone 1h AAAQO = 76 ppb  
Particulate Matter (PM<sub>2.5</sub>) 1h AAAQG = 80 ug/m<sup>3</sup>  
Nitrogen Dioxide 1h AAAQO = 159 ppb  
Operational Uptime Requirement = 90%  
AQHI Risk Value = 1-3 Low, 4-6 Moderate, 7-10 High, >10 Very High

