

March 2024: Active Monitoring Program

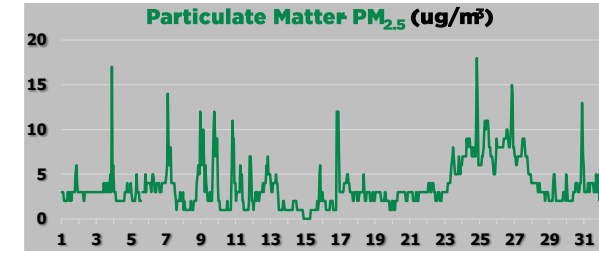
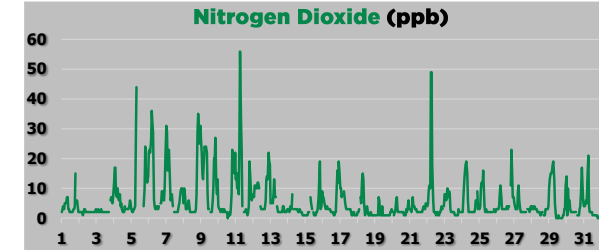
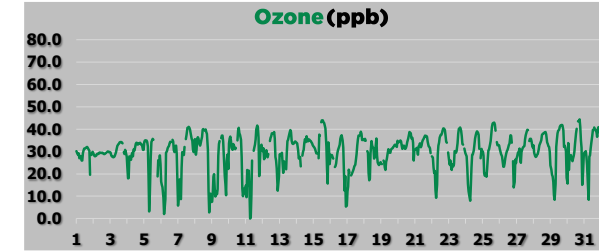
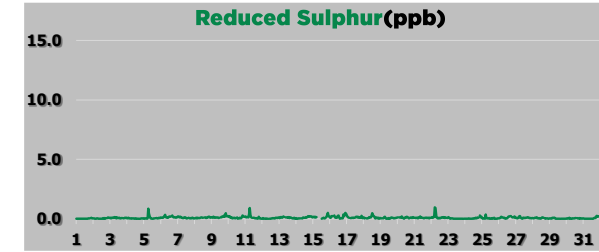
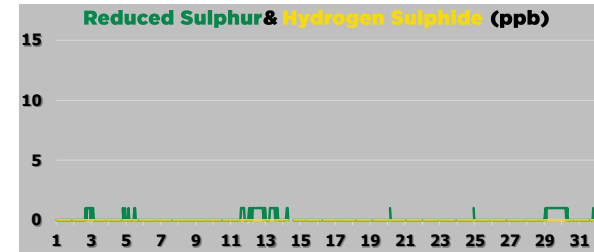
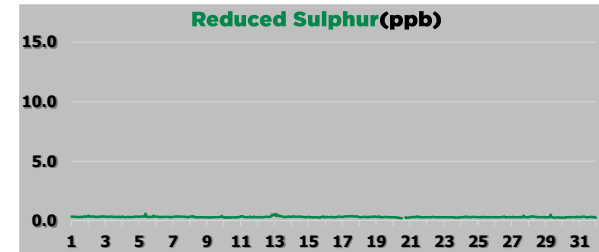
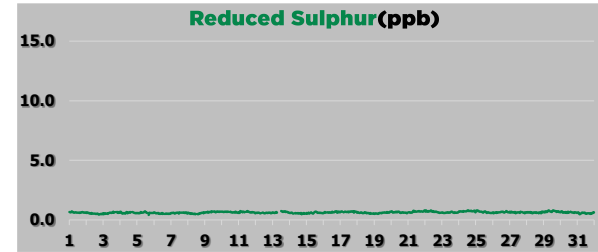
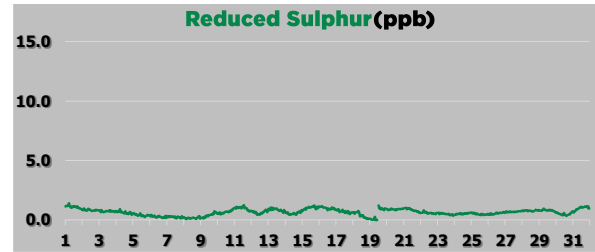
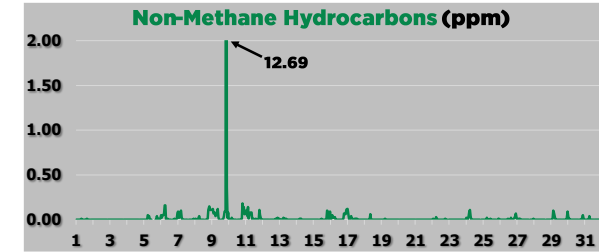
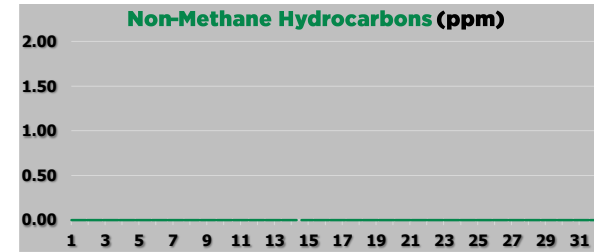
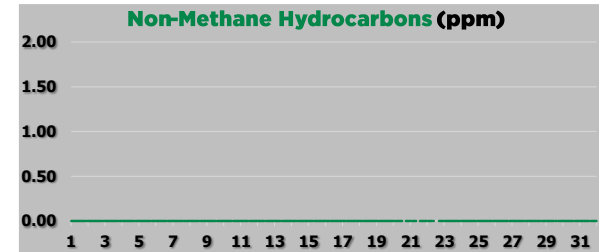
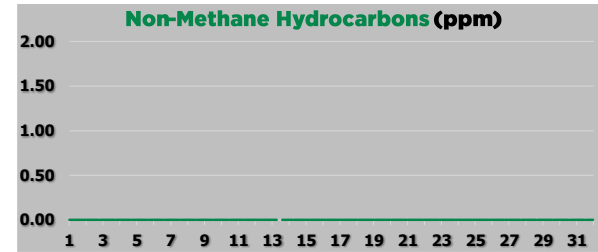
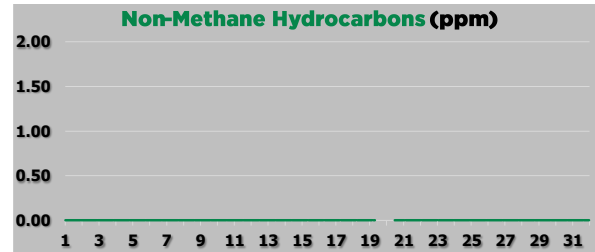
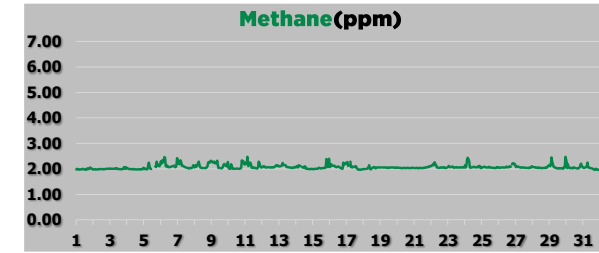
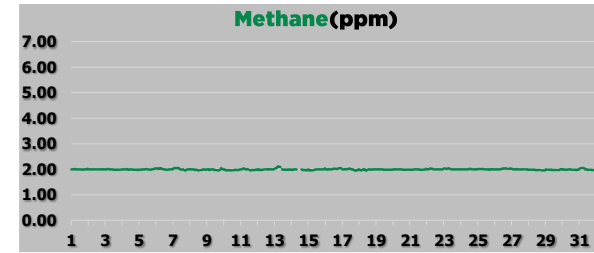
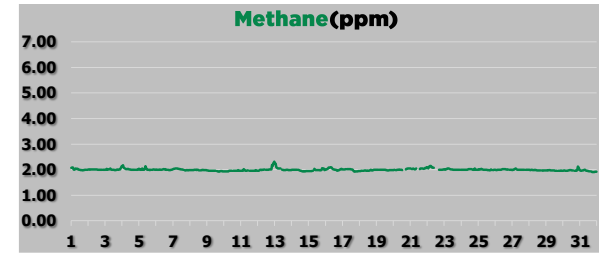
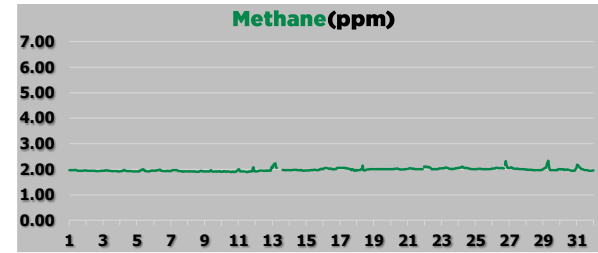
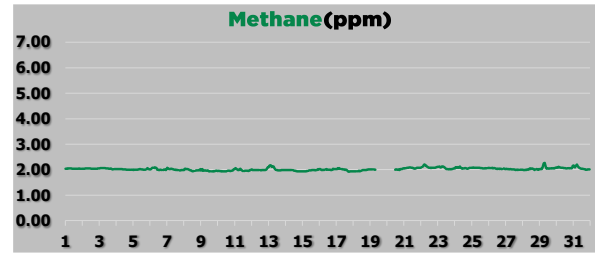
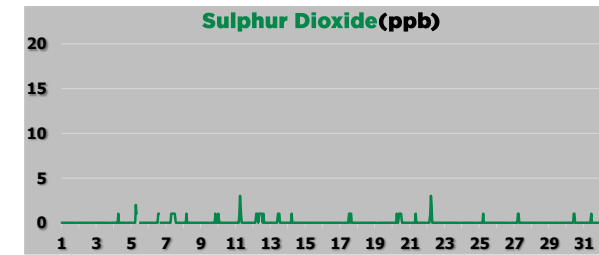
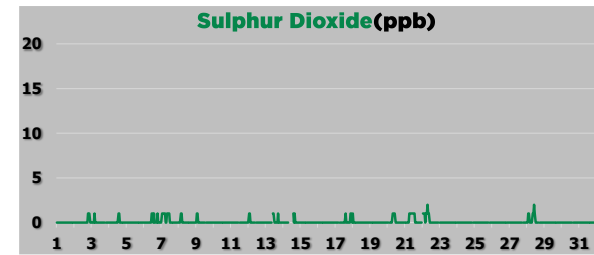
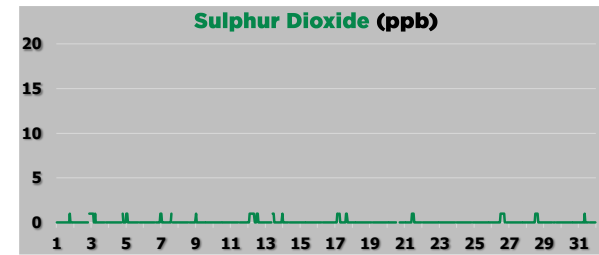
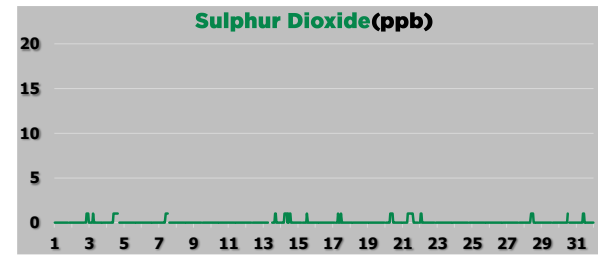
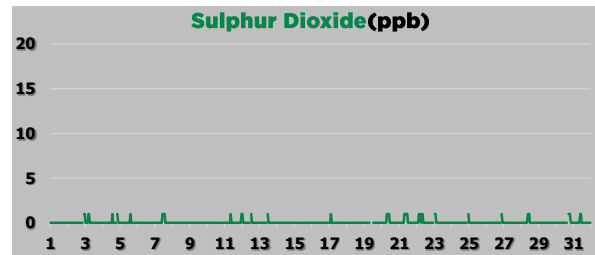
986-C Station

842-B Station

Reno-B Station

PRC Station

AQHI Station - Grimshaw



Field Operations Summary (detailed field operations notes can be found in the monthly technical reports on the PRAMP [website](#))

986-C Station

- Measured parameters were below Alberta Ambient Air Quality Objectives (AAAQOs) where applicable. All data collected this month were compliant with the requirements outlined in the AMD 2016. All parameters met the 90% operational uptime.
- THC/CH4/NMHC:** March 19, the Thermo 55i analyzer was replaced. The Analyzer was allowed time to stabilize overnight. A successful installation calibration was completed on March 20. Seventeen hours of downtime were recorded.

842-B Station

- Measured parameters were below Alberta Ambient Air Quality Objectives (AAAQOs) where applicable. All data collected this month were compliant with the requirements outlined in the AMD 2016. All parameters met the 90% operational uptime.

Reno-B Station

- Measured parameters were below Alberta Ambient Air Quality Objectives (AAAQOs) where applicable. All data collected this month were compliant with the requirements outlined in the AMD 2016. All parameters met the 90% operational uptime.

PRC Station

- Measured parameters were below Alberta Ambient Air Quality Objectives (AAAQOs) where applicable. All data collected this month were compliant with the requirements outlined in the AMD 2016. All parameters met the 90% operational uptime.

AQHI Station - Grimshaw

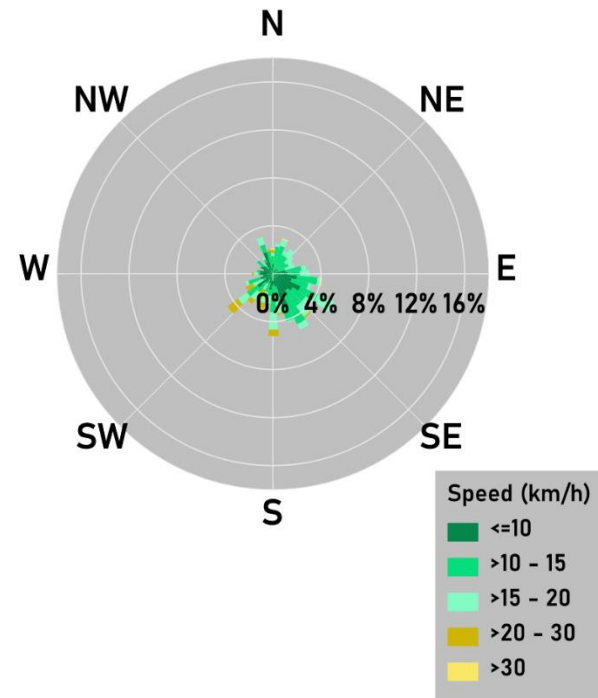
- Measured parameters were below Alberta Ambient Air Quality Objectives (AAAQOs) where applicable. All data collected this month were compliant with the requirements outlined in the AMD 2016. All parameters met the 90% operational uptime.
- SO2:** The analyzer spanned high on March 26 due to elevated station temperatures; the span check result was within the acceptable range after temperatures improved the next day.
- Elevated readings were recorded for most gas parameters on March 5, 11 and 22. Additionally, high NMHC concentrations were recorded on March 9 at hour 20. One-Minute data were reviewed, and data validity was confirmed, although some of the 1-minute data recorded for NOx, NO and NMHC were above the calibration range, which was 500 ppb.

NMHCs Canister Sampling Program

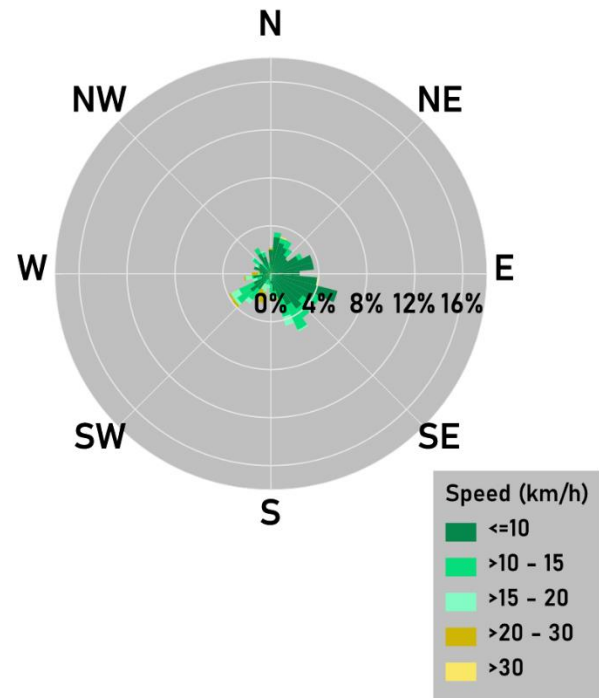
- No canister events were recorded in March.

March 2024: Active Monitoring Program

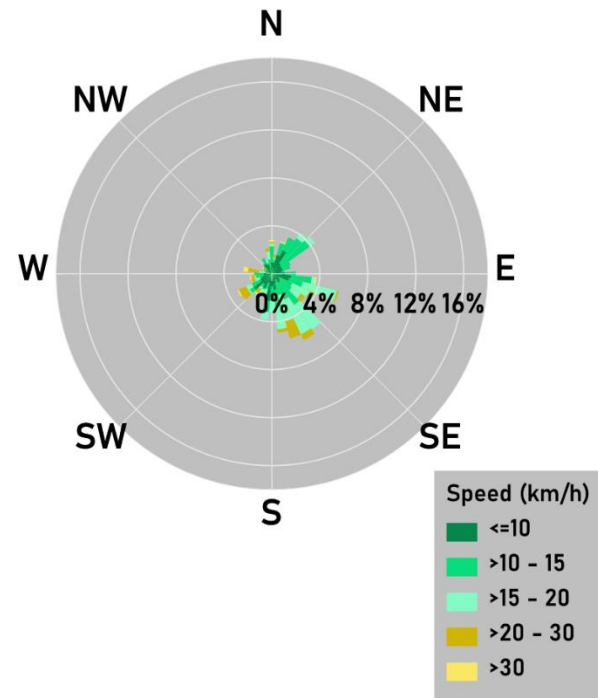
986-C Station



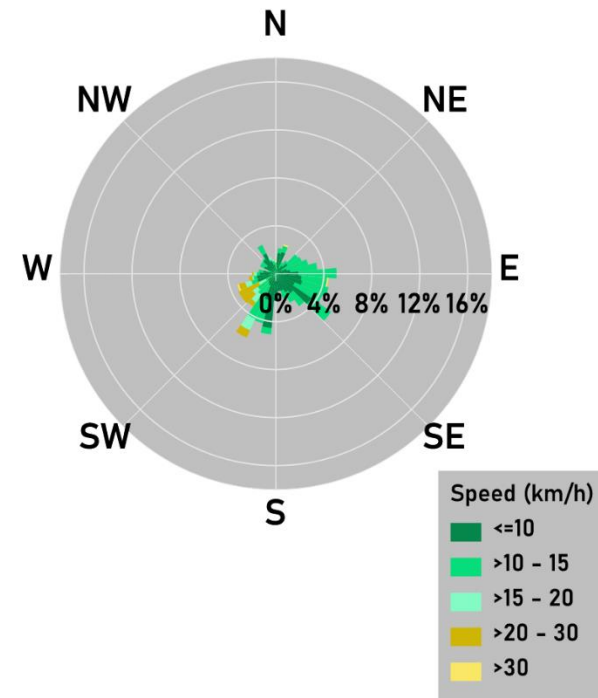
842-B Station



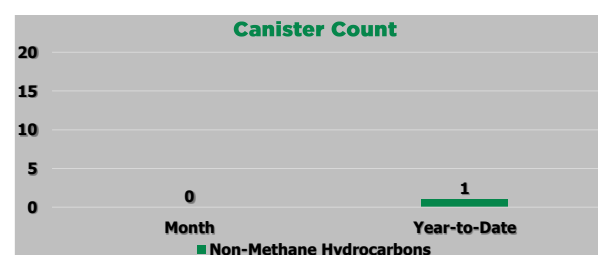
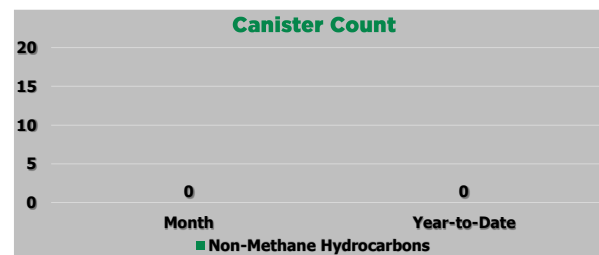
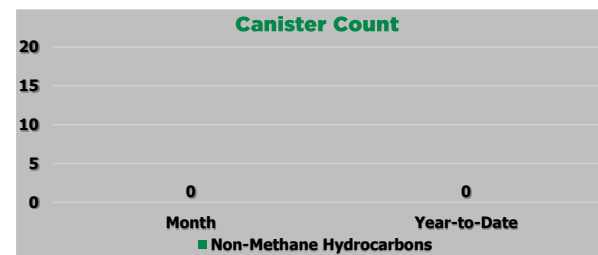
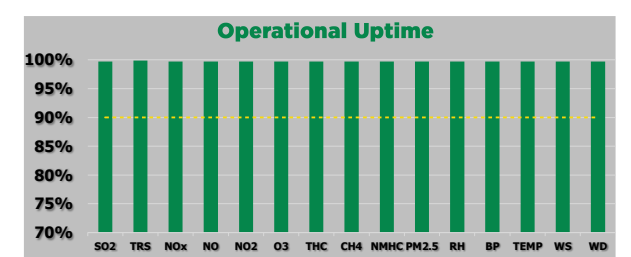
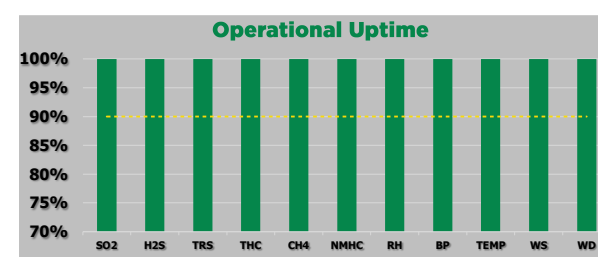
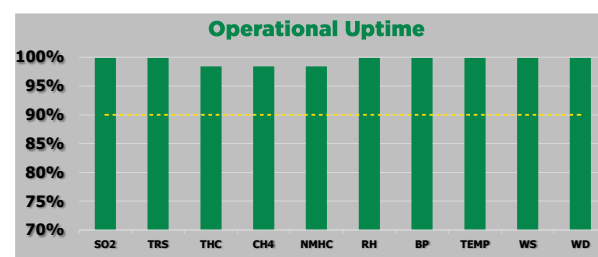
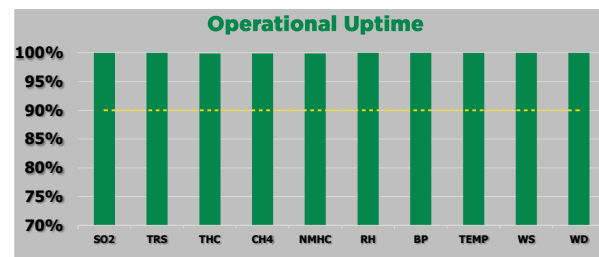
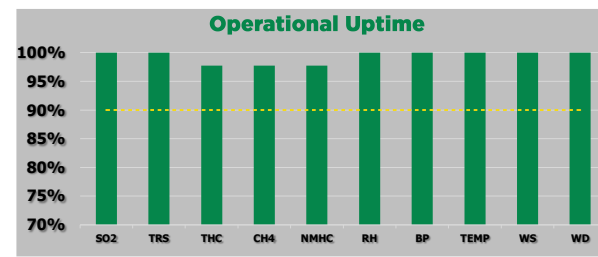
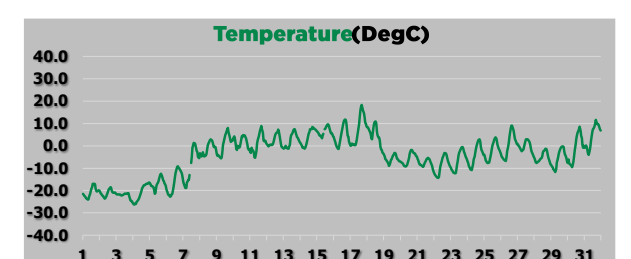
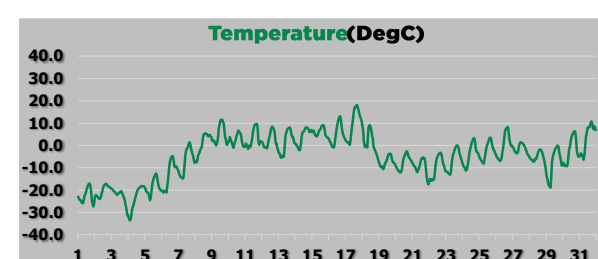
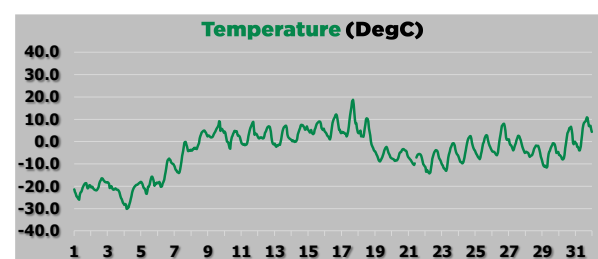
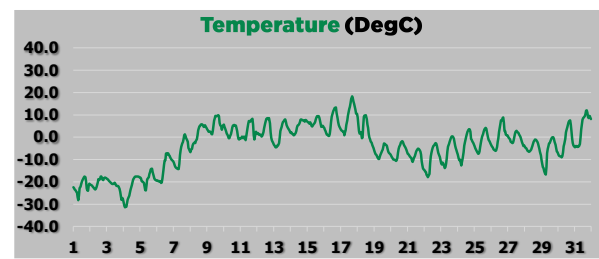
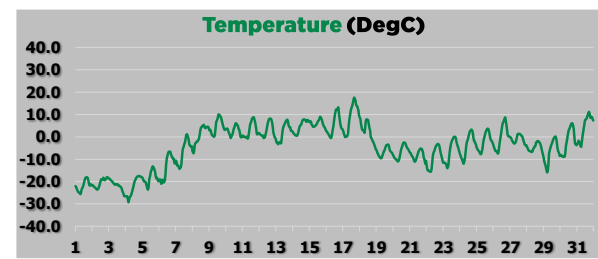
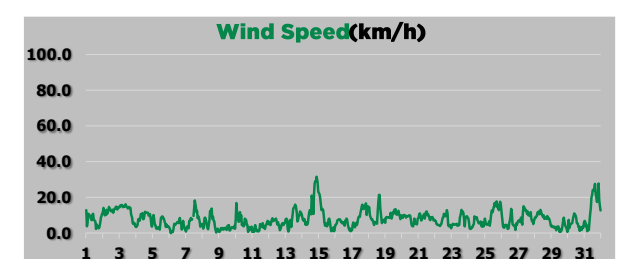
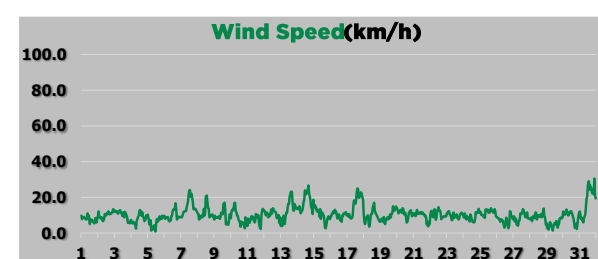
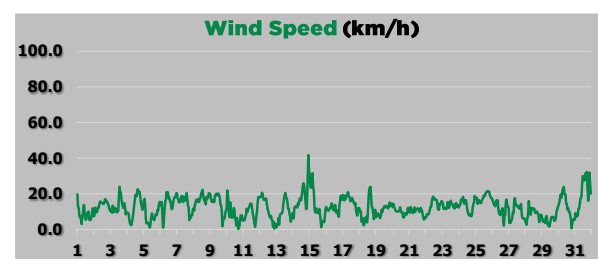
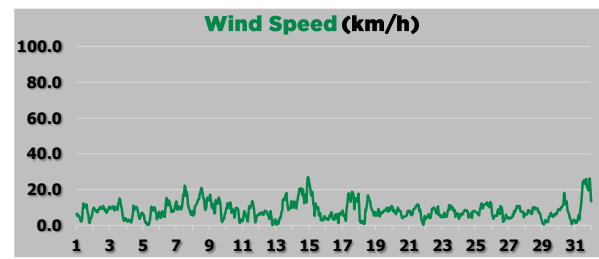
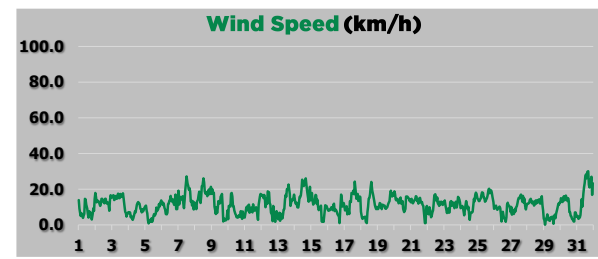
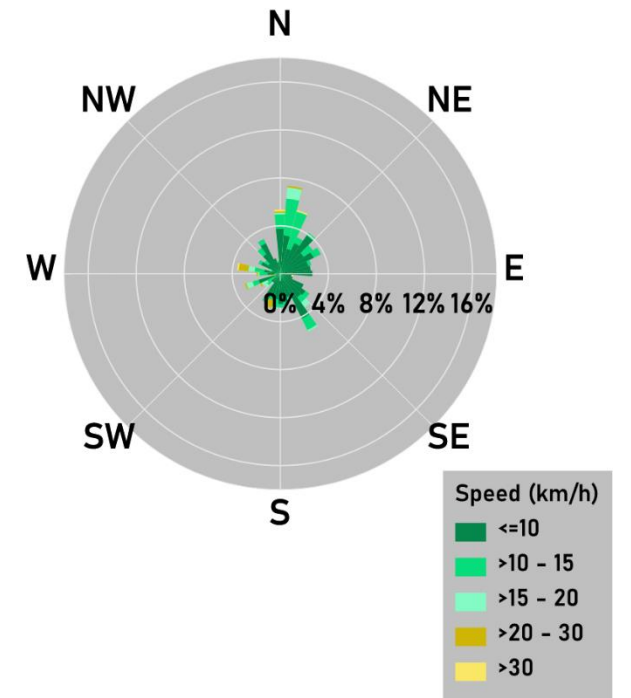
Reno-B Station



PRC Station



AQHI Station - Grimshaw



Targets, Guidelines, and Objectives
 Sulphur Dioxide 1h AAAQO = 172 ppb
 Ozone 1h AAAQO = 76 ppb
 Particulate Matter (PM_{2.5}) 1h AAAQO = 80 ug/m³
 Nitrogen Dioxide 1h AAAQO = 159 ppb
 Operational Uptime Requirement = 90%
 AQHI Risk Value = 1-3 Low, 4-6 Moderate, 7-10 High, >10 Very High

