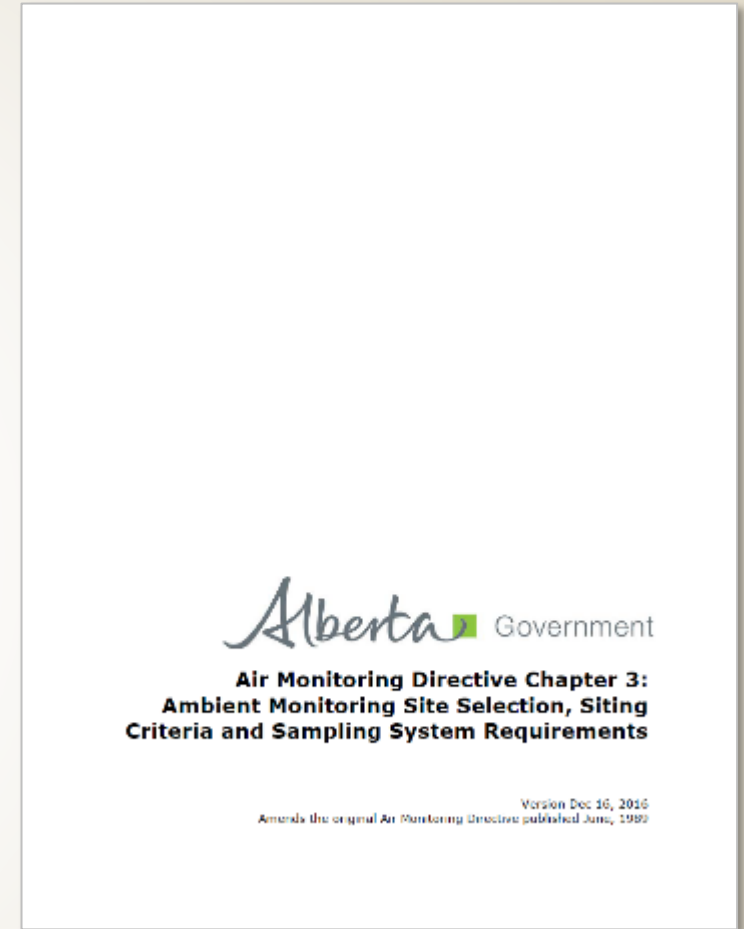


Reno Monitoring Station Discussion

- PRAMP Board of Directors Meeting
- January 20, 2022

► January 2019

- AEP Auditor identifies AMD siting non-compliance at Reno and 986b
- *"Based on observations and measurements made at the Reno/986 station, it appears that the wind speed and direction sensor siting does not meet AMD criteria found in Chapter 3 SS 2-G and Table 3/Figure 2. The wind sensor siting non-conformance was documented in the updated station site documents provided immediately following the audit. PRAMP is required to either site the wind sensor such that it meets AMD Chapter 3 siting requirements, or obtain written authorization from "The Director" to deviate from AMD siting requirements."*



2019

2020

2021

2022

► August 2019

- PRAMP relocates Station 986b to a new site approximately 1 km south of its deployment location.
- Station renamed 986c



2019

2020

2021

2022

► Winter 2020

- PRAMP staff review Reno “stay” option with TWG.
- Cost prohibitive:
 - Tree removal, grubbing, driveway extension, power service upgrade.
 - \$75,000 – \$90,000



2019

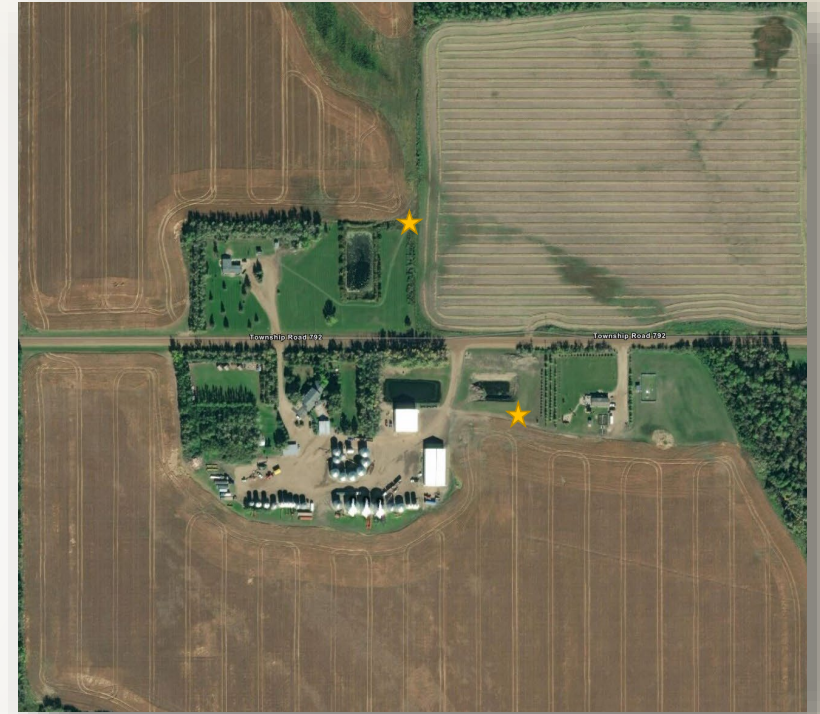
2020

2021

2022

► Spring 2020

- PRAMP staff conduct search for suitable “relocate” option for Reno monitoring station.
- Limited relocation options given search criteria:
 - Tree-free radius of 100m
 - Power availability
 - Year-round access
 - Amendable host
- A site is located, reviewed by the TWG and presented to the PRAMP Board for approval.



2019

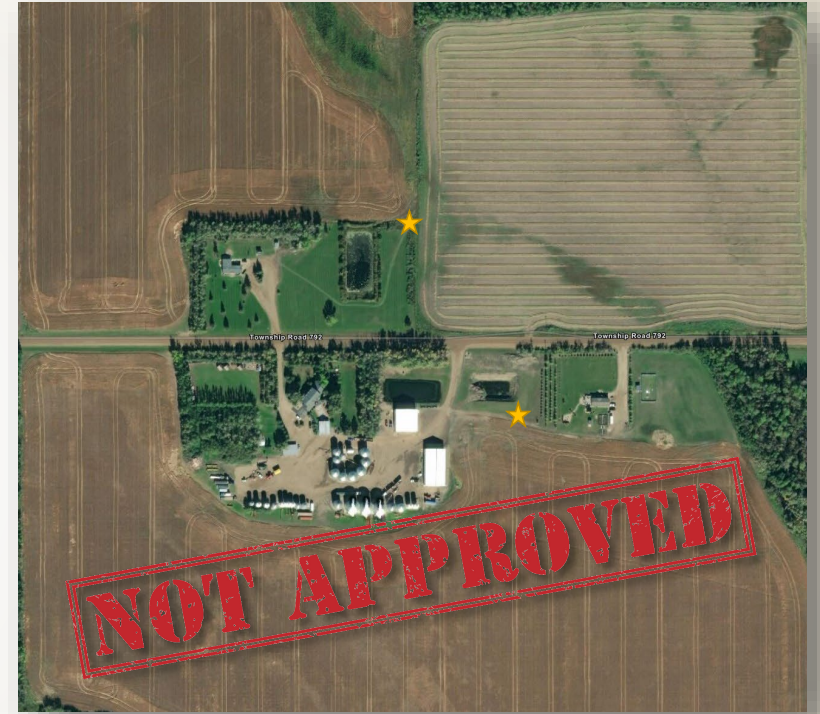
2020

2021

2022

➤ **Fall 2020**

- The PRAMP Board could not achieve a consensus decision regarding the recommended relocation site for Reno.



Winter 2021

- PRAMP Staff resume search for suitable “relocate” option for Reno monitoring station.



2019

2020

2021

2022

► Spring 2021

- A site is identified, presented to the TWG for review, and approved by the PRAMP Board.



2019

2020

2021

2022

► Summer 2021

- PRAMP Staff develop site preparation workplan for new Reno monitoring station.
- 3rd party electrical assessment indicates that the site can support the additional load of PRAMP's trailer.
- ATCO is engaged to install an additional meter.



2019

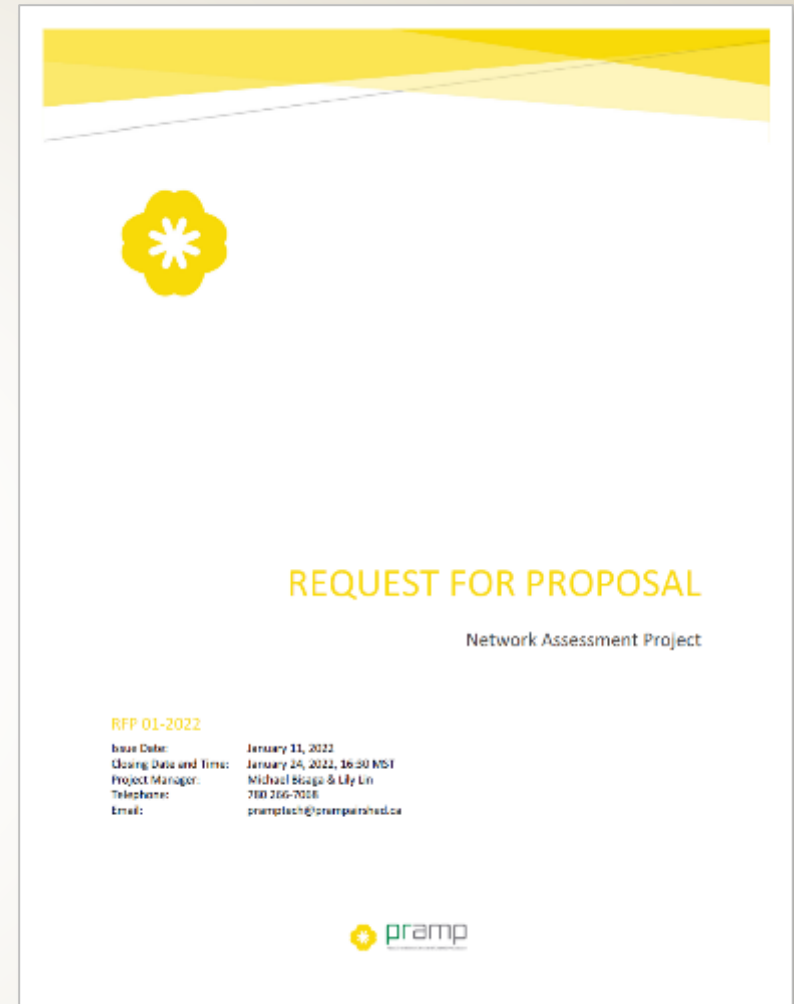
2020

2021

2022

➤ Fall 2021

- PRAMP Staff learned that costs to provide power would be higher than anticipated due to challenges associated with energizing the site.
 - Original cost estimate:
\$26,000 – \$30,000
 - Updated cost estimate:
\$40,000 – \$55,000
- The Board decided to undertake a Network Assessment that may provide recommendations on the location of stations in the PRAMP network.



2019

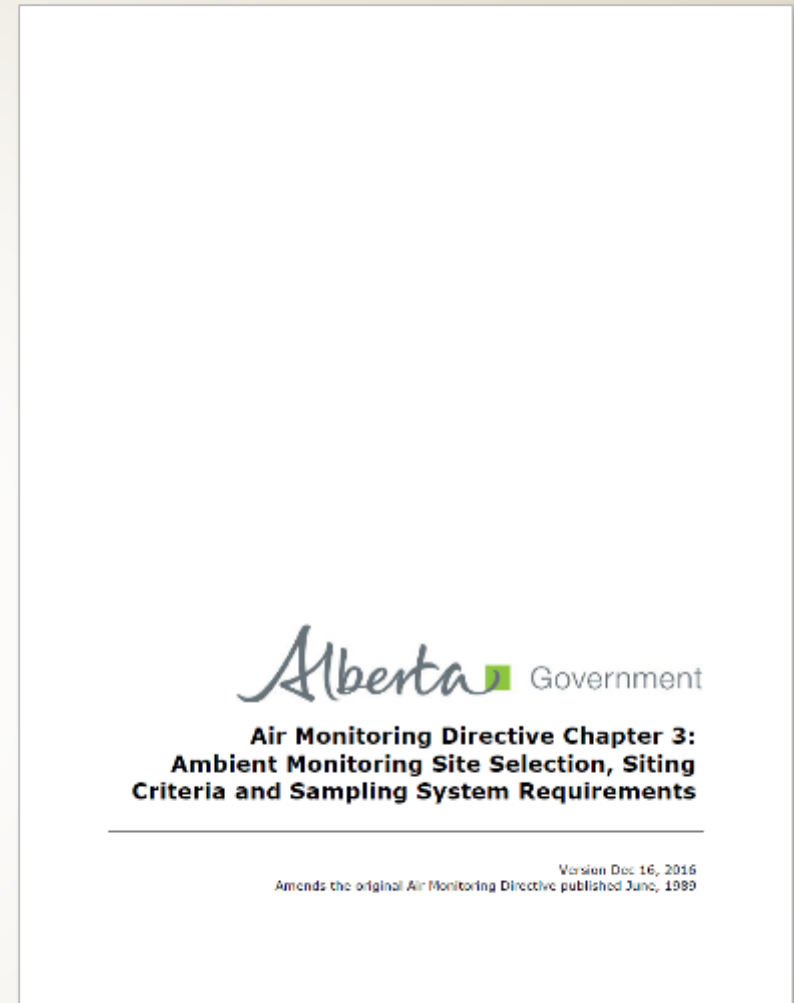
2020

2021

2022

► January 2022

- Baytex confirmed that it would prefer to have the station moved to a different location that is more representative of the air quality in the area rather than being located near the fence line of Reno facilities.
- PRAMP Staff bring the site decision back to the Board:
 - Option 1: Keep the station at the current site until the Network Assessment is complete
 - Option 2: Move the Reno station to the site approved by the Board in Spring 2021



2019

2020


2021

2022



Option 1: Keep the station at the current site until the Network Assessment is complete

- ▶ the Network Assessment could help to inform a relocation decision
- ▶ avoid investment in *any* site improvements that may commit PRAMP to a location that is contrary to outcomes of the Network Assessment
- ▶ not meeting AMD requirements creates the risk that data from the station could be seen as not reliable, valid, or representative
- ▶ there is a risk that PRAMP will not have funds to address the siting issue in future years



Option 2: Move the Reno station to the site approved by the Board in Spring 2021

- ▶ PRAMP has the funds in its 2021-22 budget
 - ▶ no funds allocated for site preparation in the 2022-23 budget
 - ▶ low likelihood that a request to carry over funds would be approved
- ▶ Moving the station would bring the station into compliance with the AMD
- ▶ Good relationship with the owner of the proposed site; expected to be a reliable host and suitable monitoring location for several years
- ▶ Several residences near proposed site adds value to the monitoring data
- ▶ Network Assessment considerations:
 - ▶ The scope of the Network Assessment would be updated to reflected the new Reno location and PRAMP's deliberations on the decision to move it
 - ▶ Risk manage any move-related recommendations for Reno