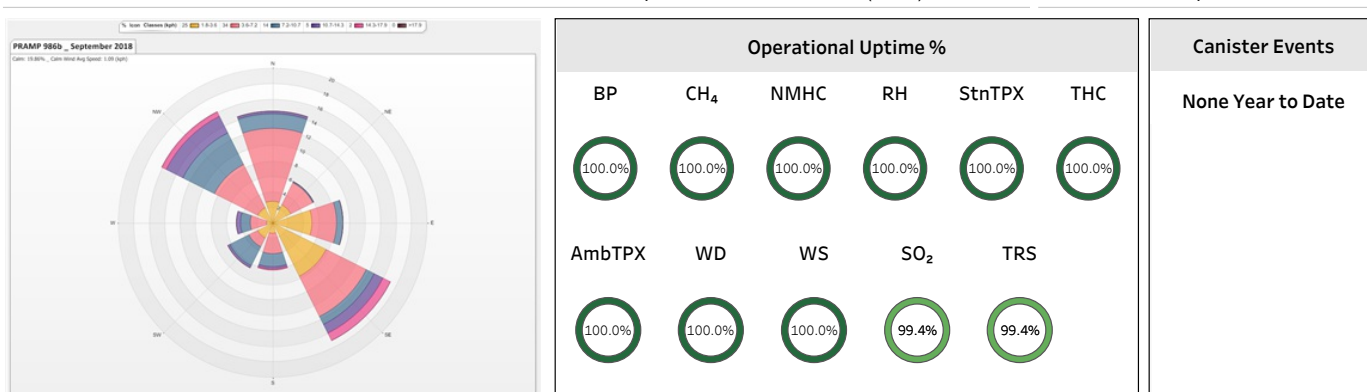


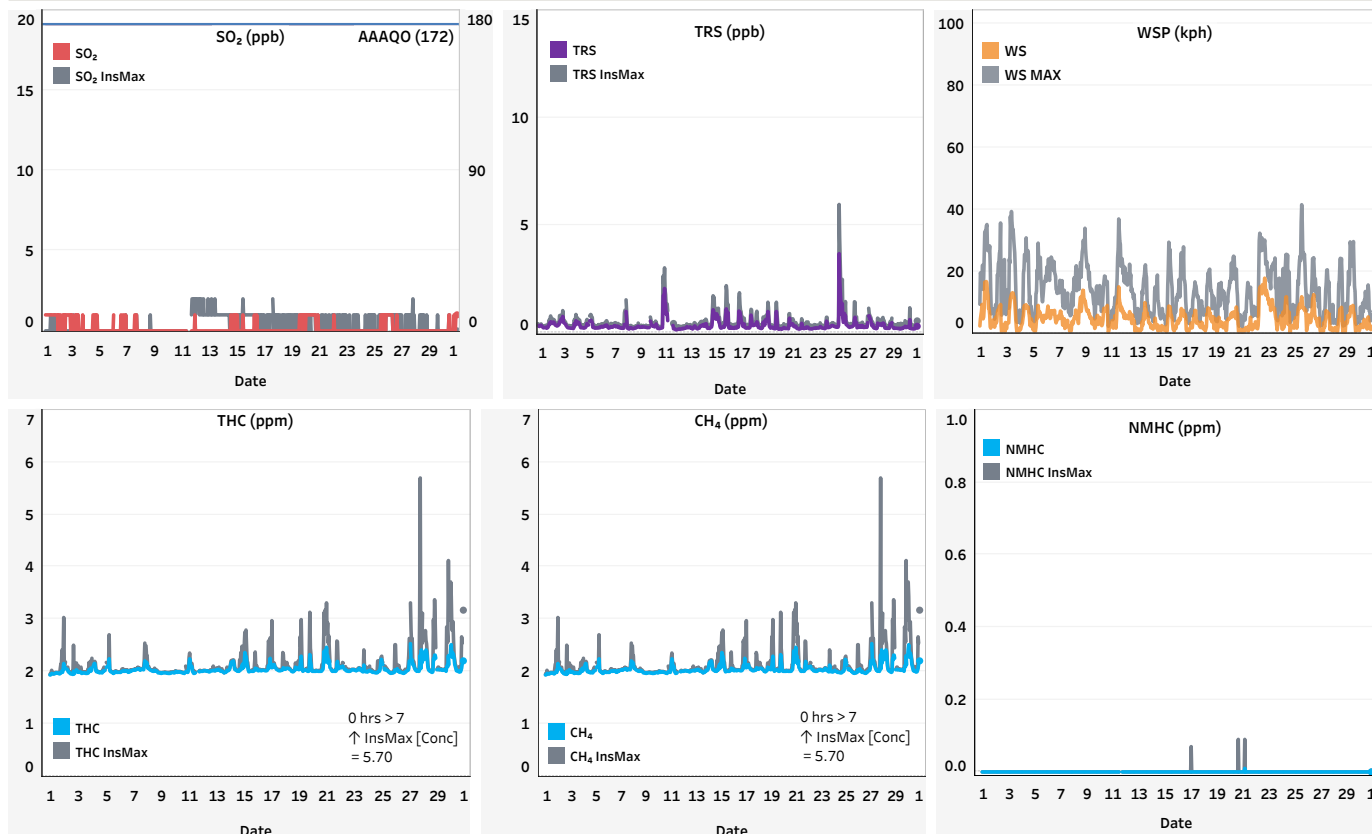
Peace River Area Monitoring Program Committee - 986b Station September 2018 Monthly Report Summary

- All data has been baseline corrected.
- All compliance parameters were within the Alberta Ambient Air Quality Objectives and Guidelines (AAAQO, 2017).
- The operational times for all continuous ambient air analyzers, meteorological systems and data acquisition systems were above 90%.

Station	Pollutant	Unit	AVG [Conc]	Uptime	Hourly Max [Conc]	Max Date	WS	WD	# Hrs >172 AAAQO	24-Hr Max [Conc]	24-Hr Avg Max Date	# Days >48 AAAQO
PRAMP - 986b	SO ₂	ppb	0	99.4%	1	Sep 1 Hr0	2.4	245 (WSW)	0	1	Sep 1	0
	TRS	ppb	0.34	99.4%	3.68	Sep 24 Hr19	2.1	140 (SE)	-	0.70	Sep 24	-
	THC	ppm	2.04	100.0%	2.53	Sep 27 Hr3	0.9	100 (E)	-	2.17	Sep 28	-
	CH ₄	ppm	2.04	100.0%	2.53	Sep 27 Hr3	0.9	100 (E)	-	2.17	Sep 28	-
	NMHC	ppm	0.00	100.0%	0.01	Sep 21 Hr5	1.2	85 (E)	-	0.00	Sep 1	-
	WS	kph	0.5	100.0%	17.8	Sep 22 Hr19	17.8	153 (SSE)	-	9.9	Sep 22	-
	WD	degree	346 (NNW)	100.0%	-	-	-	-	-	-	-	-
	RH	%	77	100.0%	100	Sep 2 Hr5	5.2	132 (SE)	-	99	Sep 8	-
	BP	mbar	947	100.0%	958	Sep 29 Hr13	9.0	338 (NNW)	-	956	Sep 29	-
	AmbTPX	°C	4.3	100.0%	18.0	Sep 7 Hr14	2.5	89 (E)	-	12.3	Sep 7	-
	StnTPX	°C	23.1	100.0%	25.1	Sep 15 Hr8	1.3	347 (NNW)	-	23.7	Sep 14	-



Operational Summary_ SO₂: Uptime was 99.4% = 4 hrs of downtime. Post-repair calibration performed on Sep 11, following the replacement of a damaged sample filter holder (-4 hrs). **TRS:** Uptime was 99.4% = 4 hrs of downtime. Initial calibration attempt on Sep 11 was unsuccessful due to operator/trainee error (-4 hrs). Analyzer was restored to as-found settings and a successful monthly calibration was subsequently completed.

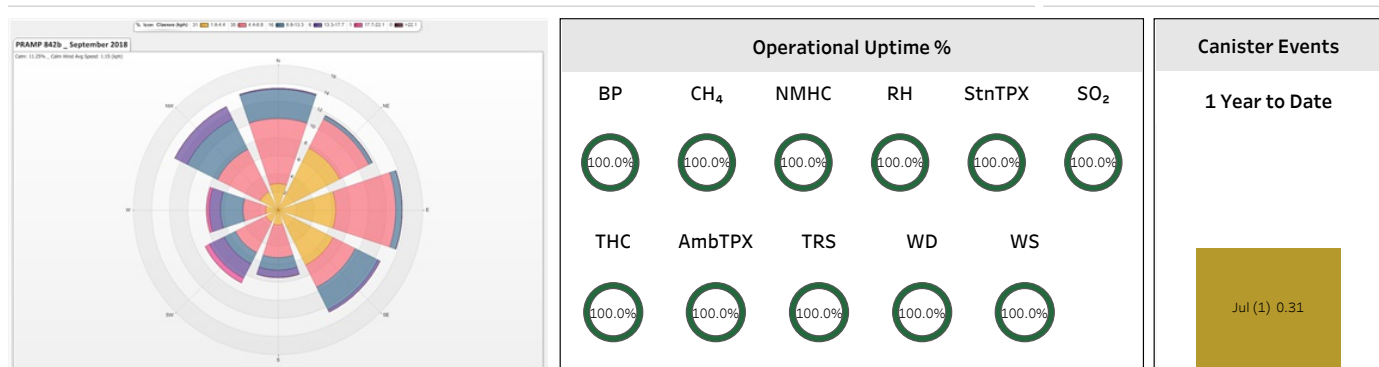


* Instantaneous hourly maximum data was not baseline-corrected and is considered raw data.

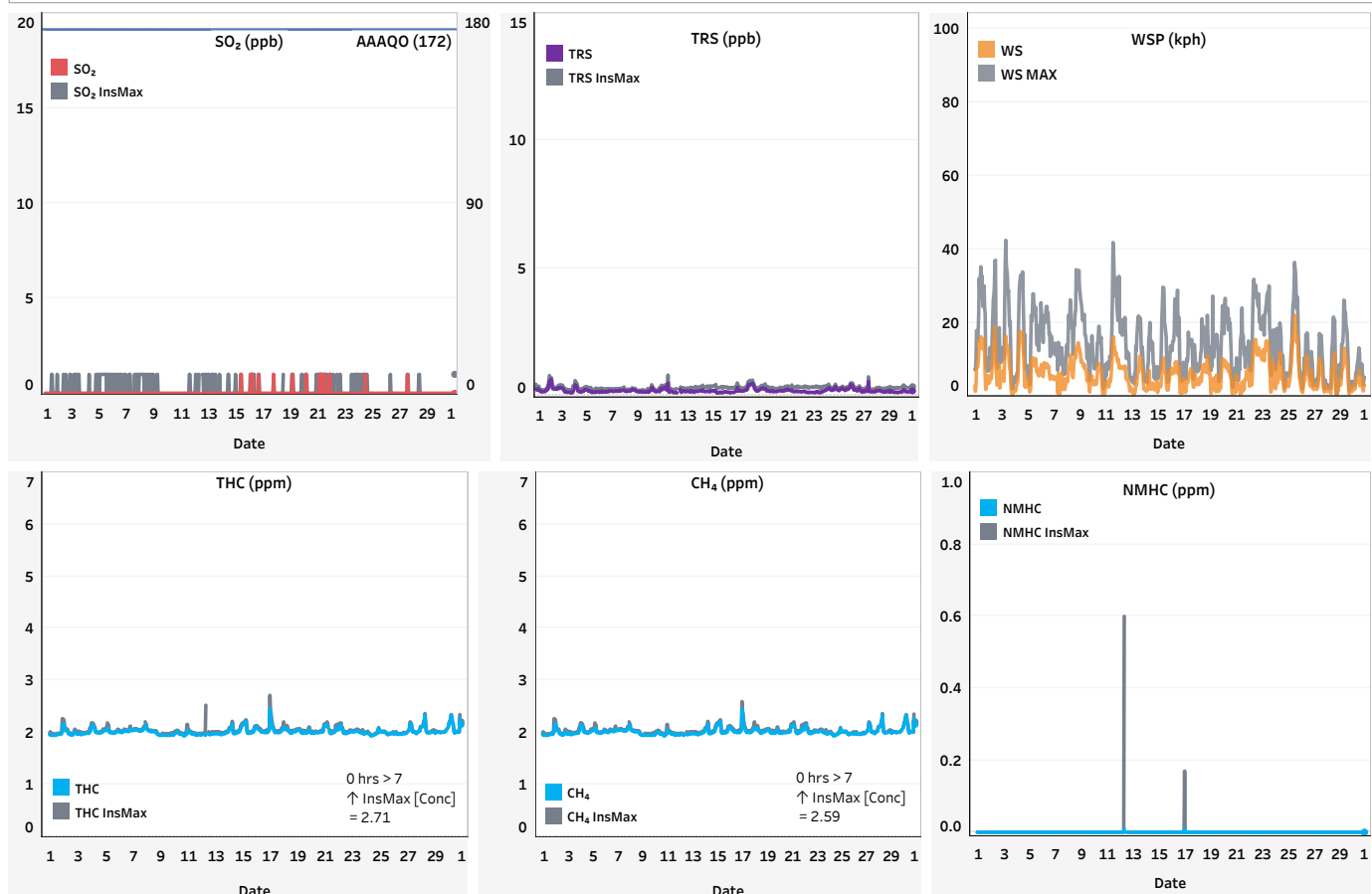
Peace River Area Monitoring Program Committee - 842b Station September 2018 Monthly Report Summary

- All data has been baseline corrected.
- All compliance parameters were within the Alberta Ambient Air Quality Objectives and Guidelines (AAAQO, 2017).
- The operational times for all continuous ambient air analyzers, meteorological systems and data acquisition systems were above 90%.

Station	Pollutant	Unit	AVG [Conc]	Uptime	Hourly Max [Conc]	Max Date	WS	WD	# Hrs >172 AAAQO	24-Hr Max [Conc]	24-Hr Avg Max Date	# Days >48 AAAQO
PRAMP - 842b	SO ₂	ppb	0	100.0%	1	Sep 15 Hr8	4.2	63 (ENE)	0	0	Sep 1	0
	TRS	ppb	0.17	100.0%	0.62	Sep 2 Hr6	4.7	135 (SE)	-	0.32	Sep 2	-
	THC	ppm	2.01	100.0%	2.45	Sep 17 Hr1	4.7	59 (ENE)	-	2.11	Sep 30	-
	CH ₄	ppm	2.01	100.0%	2.45	Sep 17 Hr1	4.7	59 (ENE)	-	2.11	Sep 30	-
	NMHC	ppm	0.00	100.0%	0.01	Sep 12 Hr9	7.7	22 (NNE)	-	0.00	Sep 1	-
	WS	kph	0.5	100.0%	22.0	Sep 25 Hr14	22.0	245 (WSW)	-	8.7	Sep 22	-
	WD	degree	312 (NW)	100.0%	-	-	-	-	-	-	-	-
	RH	%	75	100.0%	96	Sep 2 Hr5	5.5	145 (SE)	-	93	Sep 9	-
	BP	mbar	947	100.0%	958	Sep 29 Hr9	13.0	290 (WNW)	-	957	Sep 29	-
	AmbTPX	°C	4.0	100.0%	18.6	Sep 7 Hr14	2.2	344 (NNW)	-	12.6	Sep 7	-
	StnTPX	°C	22.5	100.0%	23.9	Sep 1 Hr19	5.6	346 (NNW)	-	22.9	Sep 2	-



Operational Summary _ No operational issues contributing to downtime were encountered this month.

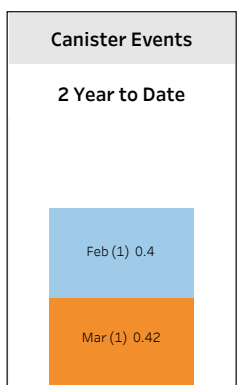
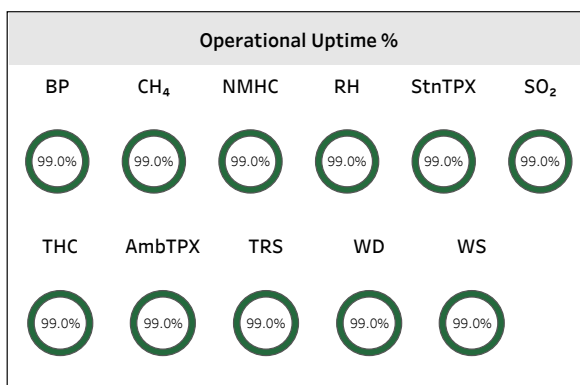
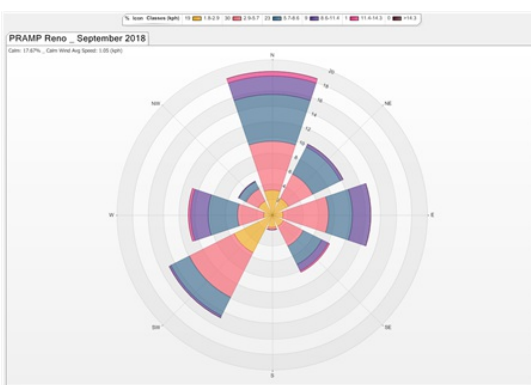


* Instantaneous hourly maximum data was not baseline-corrected and is considered raw data.

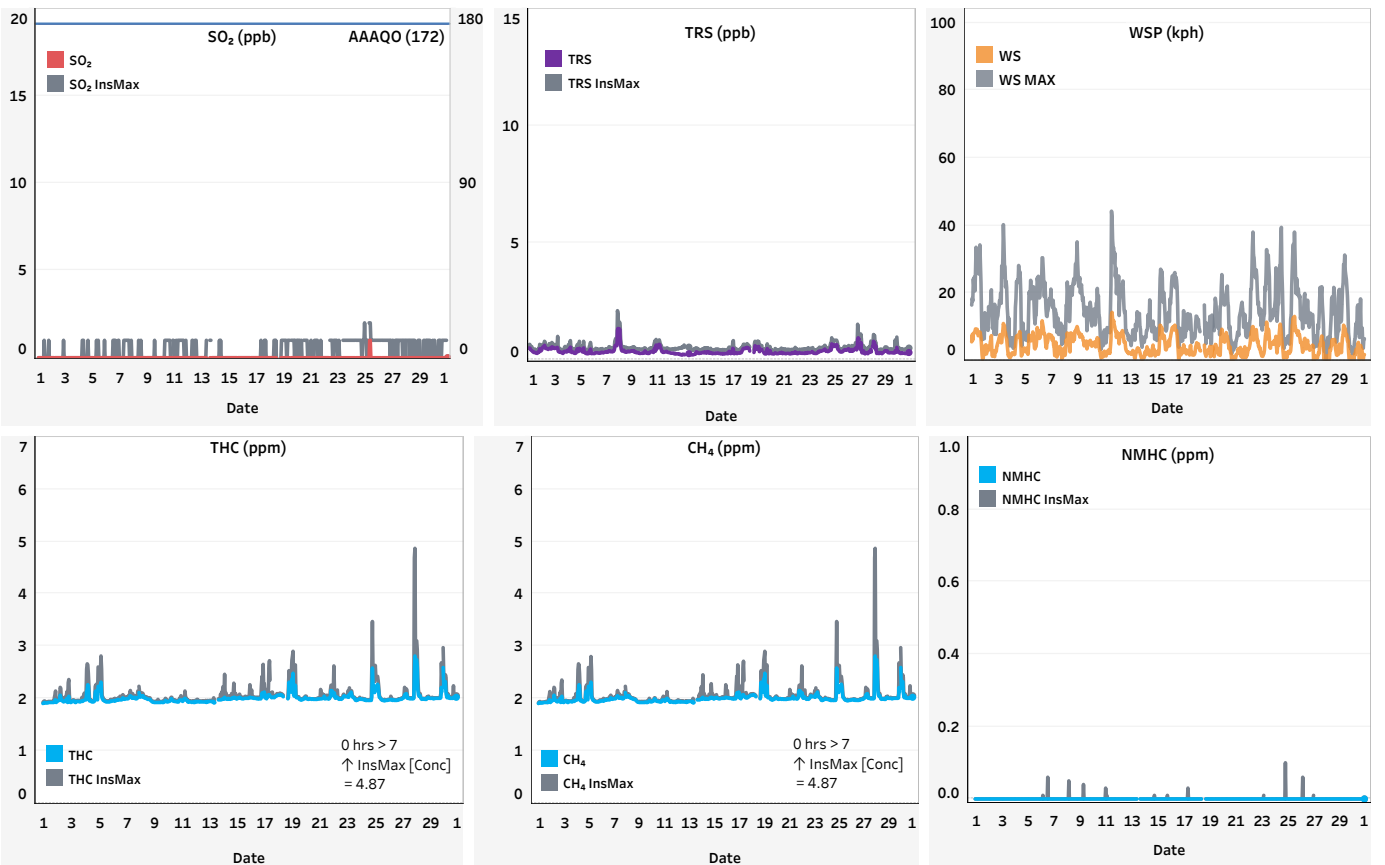
Peace River Area Monitoring Program Committee - Reno Station September 2018 Monthly Report Summary

- All data has been baseline corrected.
- All compliance parameters were within the Alberta Ambient Air Quality Objectives and Guidelines (AAAQO, 2017).
- The operational times for all continuous ambient air analyzers, meteorological systems and data acquisition systems were above 90%.

Station	Pollutant	Unit	AVG [Conc]	Uptime	Hourly Max [Conc]	Max Date	WS	WD	# Hrs >172 AAAQO	24-Hr Max [Conc]	24-Hr Avg Max Date	# Days >48 AAAQO
PRAMP - Reno	SO ₂	ppb	0	99.0%	1	Sep 25 Hr6	2.1	211 (SSW)	0	0	Sep 1	0
	TRS	ppb	0.35	99.0%	1.33	Sep 8 Hr1	3.6	29 (NNE)	-	0.58	Sep 8	-
	THC	ppm	2.00	99.0%	2.81	Sep 27 Hr23	1.3	233 (SW)	-	2.09	Sep 18	-
	CH ₄	ppm	2.00	99.0%	2.81	Sep 27 Hr23	1.3	233 (SW)	-	2.09	Sep 18	-
	NMHC	ppm	0.00	99.0%	0.00	Sep 1 Hr0	5.5	235 (SW)	-	0.00	Sep 1	-
	WS	kph	0.7	99.0%	14.2	Sep 11 Hr17	14.2	11 (NNE)	-	7.5	Sep 6	-
	WD	degree	12 (NNE)	99.0%	-	-	-	-	-	-	-	-
	RH	%	71	99.0%	95	Sep 11 Hr8	2.3	216 (SW)	-	91	Sep 8	-
	BP	mbar	943	99.0%	953	Sep 29 Hr9	10.4	2 (N)	-	952	Sep 29	-
	AmbTPX	°C	4.7	99.0%	19.5	Sep 7 Hr14	2.2	260 (WSW)	-	13.7	Sep 7	-
	StnTPX	°C	22.5	99.0%	25.4	Sep 14 Hr15	2.1	44 (NE)	-	23.4	Sep 12	-



Operational Summary_ All Parameters: Uptime was 99.0%. Datalogger upgrade implemented between Sep 18 and 19 to replace ESC 8832 datalogger with Envidas Ultimate (-7 hrs).



* Instantaneous hourly maximum data was not baseline-corrected and is considered raw data.