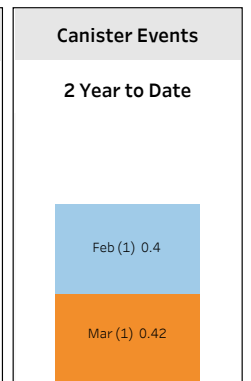
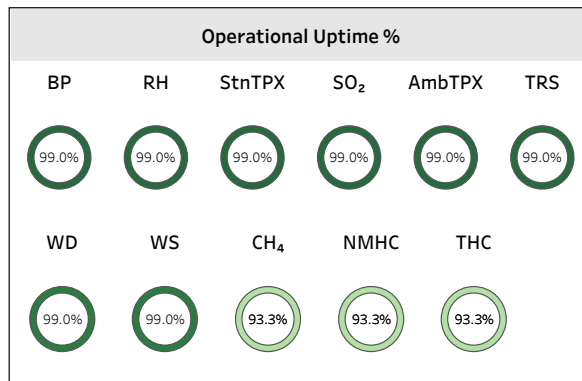
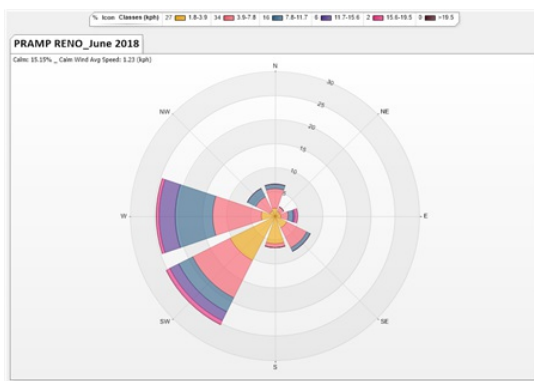


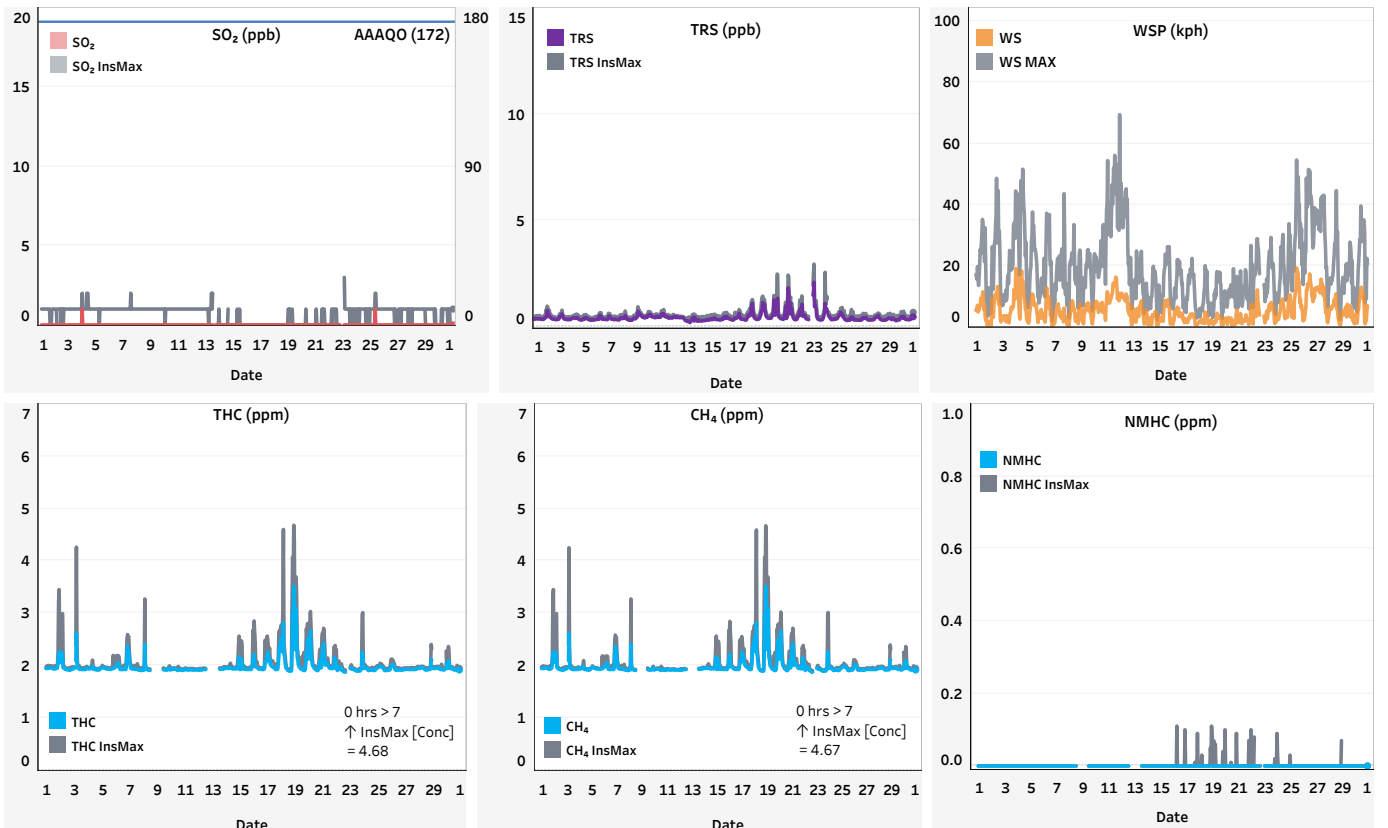
Peace River Area Monitoring Program Committee - Reno Station June 2018 Monthly Report Summary

- All data has been baseline corrected.
- All compliance parameters were within the Alberta Ambient Air Quality Objectives and Guidelines (AAAQO, 2017).
- The operational times for all continuous ambient air analyzers, meteorological systems and data acquisition systems were above 90%.
- Maximum instantaneous data was not baseline-corrected.

Station	Pollutant	Unit	AVG [Conc]	Uptime	Hourly Max [Conc]	Max Date	WS	WD	# Hrs >172 AAAQO	24-Hr Max [Conc]	24-Hr Avg Max Date	# Days >48 AAAQO
PRAMP - Reno	SO ₂	ppb	0	99.0%	1	Jun 3 Hr23	10.5	105 (ESE)	0	0	Jun 20	0
	TRS	ppb	0.43	99.0%	2.10	Jun 23 Hr3	1.5	291 (WN..)	-	0.66	Jun 20	-
	THC	ppm	1.98	93.3%	3.51	Jun 18 Hr23	2.4	198 (SSW)	-	2.26	Jun 12	-
	CH ₄	ppm	1.98	93.3%	3.51	Jun 18 Hr23	2.4	198 (SSW)	-	2.26	Jun 21	-
	NMHC	ppm	0.00	93.3%	0.00	Jun 1 Hr0	5.6	128 (SE)	-	0.00	Jun 1	-
	WS	kph	3.0	99.0%	19.4	Jun 25 Hr13	19.4	235 (SW)	-	10.9	Jun 11	-
	WD	degree	251 (WSW)	99.0%	-	-	-	-	-	-	-	-
	RH	%	61	99.0%	94	Jun 2 Hr3	0.6	2 (N)	-	87	Jun 2	-
	BP	mbar	934	99.0%	944	Jun 16 Hr5	5.3	248 (WSW)	-	943	Jun 16	-
	AmbTPX	°C	14.9	99.0%	31.6	Jun 20 Hr16	1.8	0 (N)	-	24.8	Jun 1	-
StnTPX	°C	21.8	99.0%	25.0	Jun 20 Hr18	2.1	167 (SSE)	-	23.3	Jun 11	-	



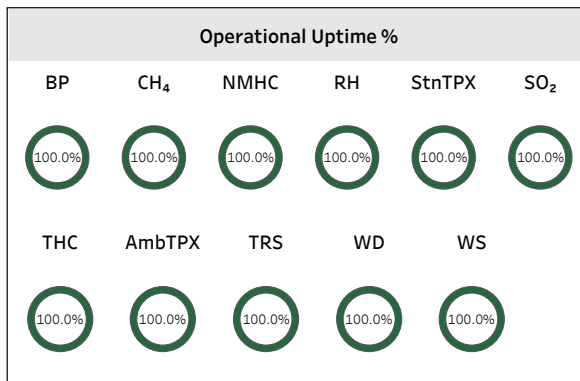
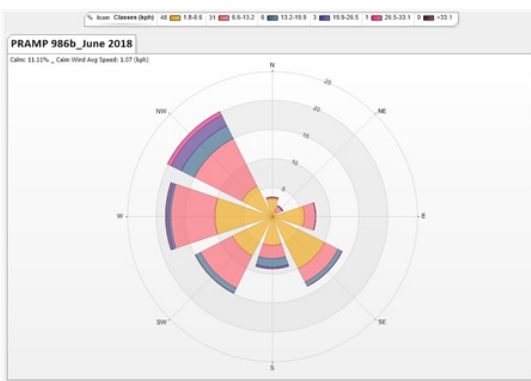
Operational Summary_ All Parameters: Uptime was 99.0%. A power failure occurred from hr 18 on June 22 to hr 0 on June 23 (-7 hrs). **THC/CH₄/NMHC:** Uptime was 93.3% = 48 hours of downtime. Low fuel gas pressure between June 8 and 9 (-22 hrs). Analyzer flamed out between June 12 and 13 (-19 hrs).



Peace River Area Monitoring Program Committee - 986b Station June 2018 Monthly Report Summary

- All data has been baseline corrected.
- All compliance parameters were within the Alberta Ambient Air Quality Objectives and Guidelines (AAAQO, 2017).
- The operational times for all continuous ambient air analyzers, meteorological systems and data acquisition systems were above 90%.
- Maximum instantaneous data was not baseline-corrected.

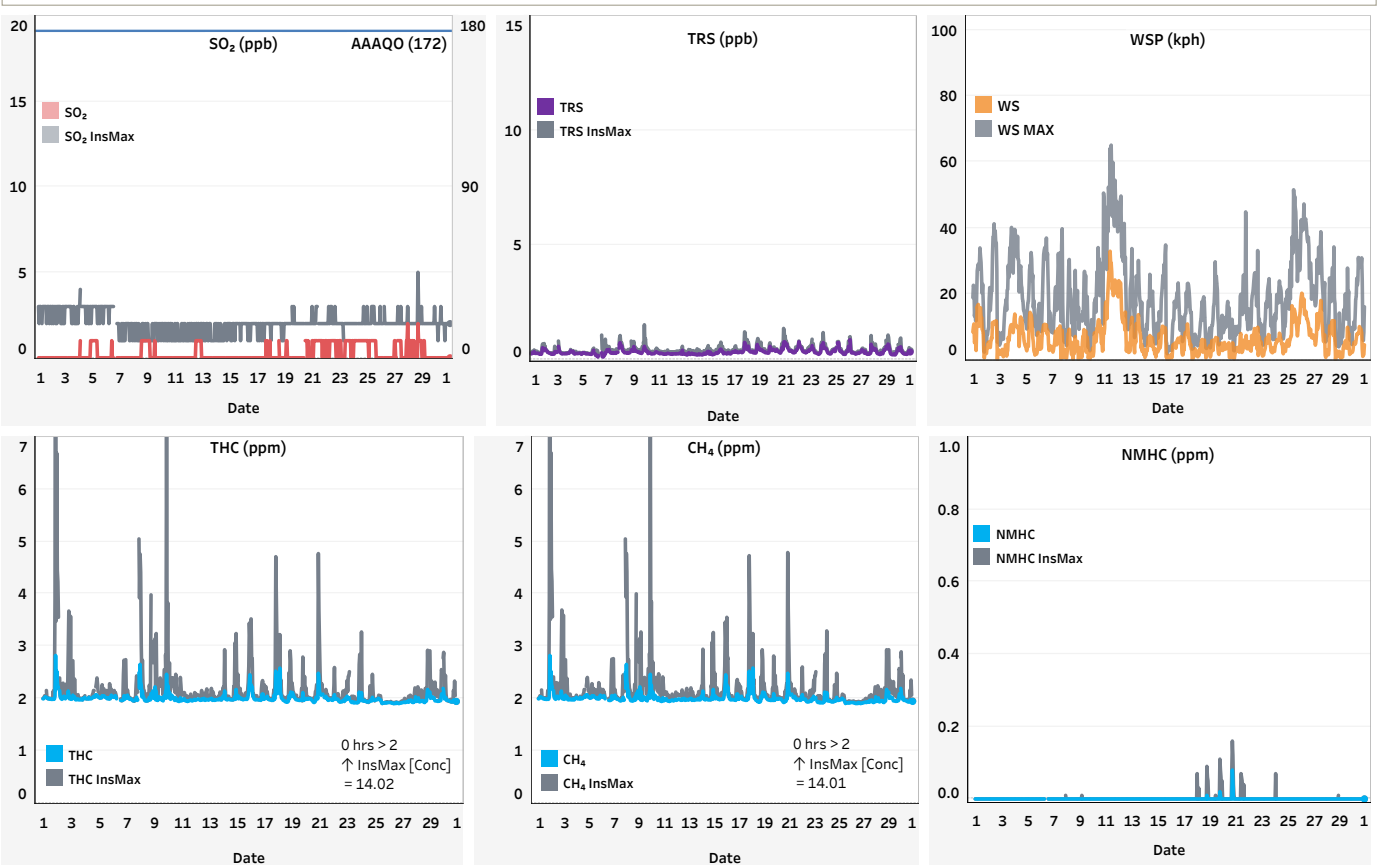
Station	Pollutant	Unit	AVG [Conc]	Uptime	Hourly Max [Conc]	Max Date	WS	WD	# Hrs >172 AAAQO	24-Hr Max [Conc]	24-Hr Avg Max Date	# Days >48 AAAQO
PRAMP - 986b	SO ₂	ppb	0	100.0%	2	Jun 27 Hr21	7.5	284 (W)	0	1	Jun 21	0
	TRS	ppb	0.33	100.0%	0.87	Jun 26 Hr5	20.0	173 (S)	-	0.46	Jun 21	-
	THC	ppm	2.00	100.0%	2.82	Jun 1 Hr22	1.9	106 (ESE)	-	2.08	Jun 2	-
	CH ₄	ppm	2.00	100.0%	2.82	Jun 1 Hr22	1.9	106 (ESE)	-	2.08	Jun 2	-
	NMHC	ppm	0.00	100.0%	0.00	Jun 20 Hr0	4.1	126 (SE)	-	0.01	Jun 20	-
	WS	kph	2.6	100.0%	33.0	Jun 11 Hr12	33.0	295 (WN..)	-	20.5	Jun 11	-
	WD	degree	264 (W)	100.0%	-	-	-	-	-	-	-	-
	RH	%	69	100.0%	100	Jun 4 Hr23	5.1	291 (WN..)	-	98	Jun 12	-
	BP	mbar	937	100.0%	948	Jun 16 Hr8	4.8	270 (W)	-	946	Jun 16	-
	AmbTPX	°C	14.9	100.0%	33.9	Jun 20 Hr16	0.8	295 (WN..)	-	25.6	Jun 20	-
StnTPX	°C	22.4	100.0%	25.0	Jun 3 Hr6	3.3	190 (S)	-	23.6	Jun 3	-	



Canister Events

None Year to Date

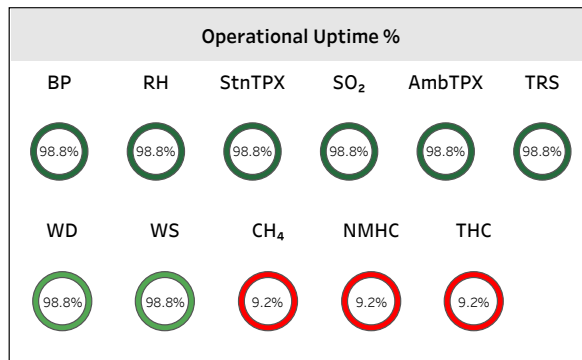
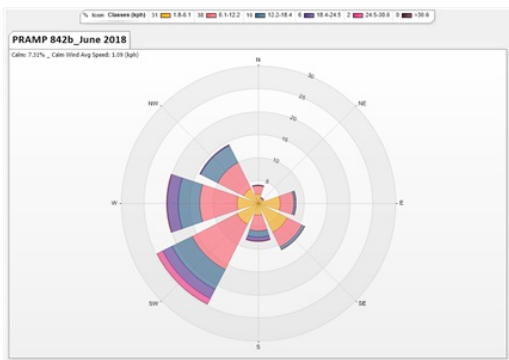
Operational Summary_ No operational issues contributing to downtime were identified this month.



Peace River Area Monitoring Program Committee - 842b Station June 2018 Monthly Report Summary

- All data has been baseline corrected.
- All compliance parameters were within the Alberta Ambient Air Quality Objectives and Guidelines (AAAQO, 2017).
- The operational times for all continuous ambient air analyzers, meteorological systems and data acquisition systems, with the exception of THC/CH₄/NMHC, were above 90%.
- Maximum instantaneous data was not baseline-corrected.

Station	Pollutant	Unit	AVG [Conc]	Uptime	Hourly Max [Conc]	Max Date	WS	WD	# Hrs >172 AAAQO	24-Hr Max [Conc]	24-Hr Avg Max Date	# Days >48 AAAQO
PRAMP - 842b	SO ₂	ppb	0	98.8%	1	Jun 2 Hr0	3.1	113 (ESE)	0	0	Jun 18	0
	TRS	ppb	0.22	98.8%	1.32	Jun 23 Hr3	1.3	218 (SW)	-	0.46	Jun 18	-
	THC	ppm	1.93	9.2%	2.00	Jun 1 Hr1	6.4	141 (SE)	-	1.99	Jun 18	-
	CH ₄	ppm	1.93	9.2%	2.00	Jun 1 Hr1	6.4	141 (SE)	-	1.99	Jun 18	-
	NMHC	ppm	0.00	9.2%	0.00	Jun 1 Hr0	7.0	144 (SE)	-	0.00	Jun 18	-
	WS	kph	4.6	98.8%	30.5	Jun 25 Hr14	30.5	231 (SW)	-	19.5	Jun 18	-
	WD	degree	244 (WSW)	98.8%	-	-	-	-	-	-	-	-
	RH	%	65	98.8%	96	Jun 5 Hr1	6.7	260 (WSW)	-	90	Jun 18	-
	BP	mbar	938	98.8%	948	Jun 16 Hr5	1.3	119 (ESE)	-	946	Jun 18	-
	AmbTPX	°C	14.4	98.8%	31.6	Jun 20 Hr16	5.9	263 (W)	-	24.9	Jun 18	-
	StnTPX	°C	23.6	98.8%	25.4	Jun 23 Hr20	7.5	228 (SW)	-	24.5	Jun 18	-



Canister Events

None Year to Date

Operational Summary_ All Parameters: Uptime was 98.8%. Two power events occurred on June 4 and June 27 (-9 hrs). **THC/CH₄/NMHC:** Uptime was 9.2% = 654 hours of downtime. Analyzer failed to recover after fuel gas replacement on June 2, due to hardware failure. A replacement analyzer was installed on June 4 (-76 hrs). Analyzer failed as-found response check on June 26. Data was discarded back to the calibration on June 4 (-578 hrs).

