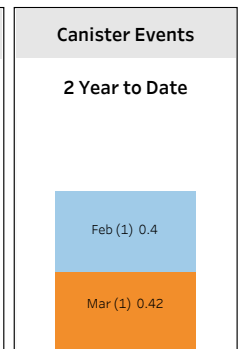
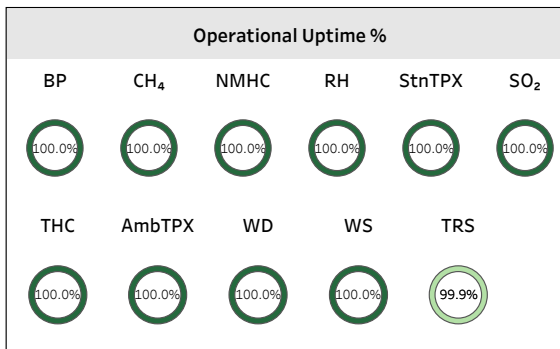
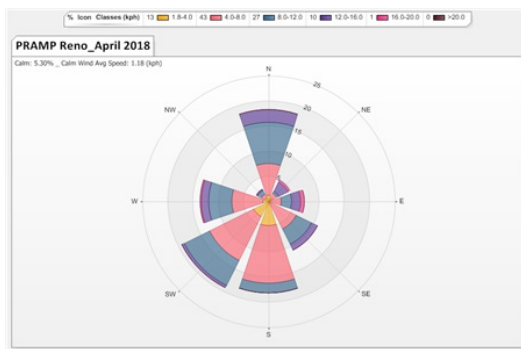


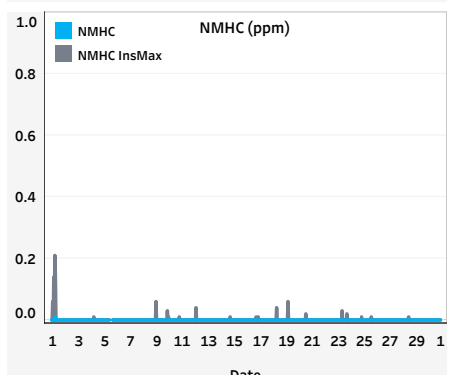
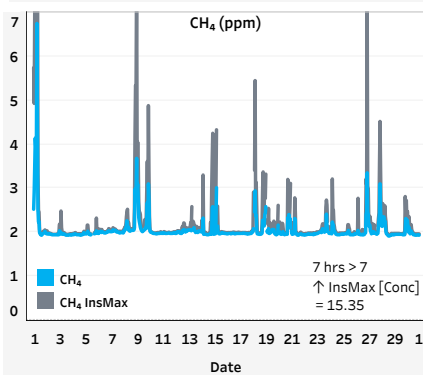
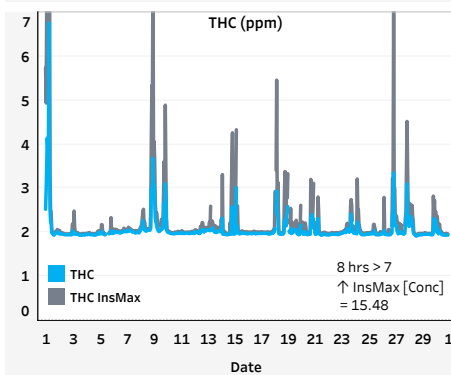
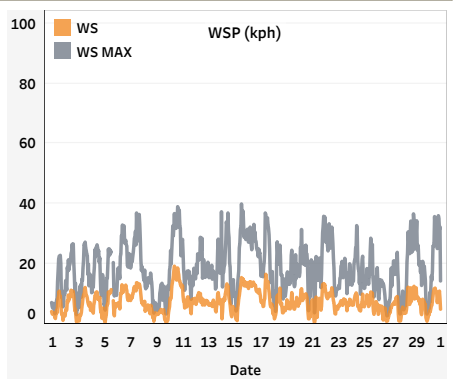
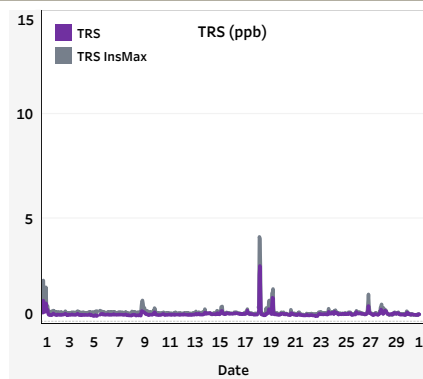
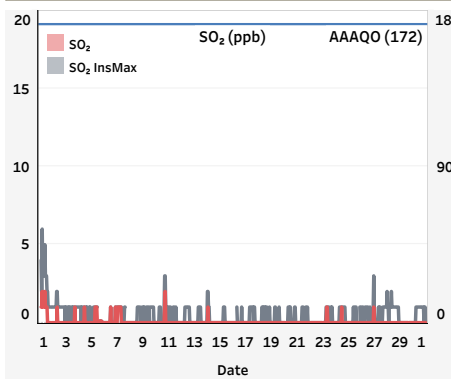
Peace River Area Monitoring Program Committee - Reno Station April 2018 Monthly Report Summary

- All data has been baseline corrected.
- All compliance parameters were within the Alberta Ambient Air Quality Objectives and Guidelines (AAAQO, 2017).
- The operational times for all continuous ambient air analyzers, meteorological systems and data acquisition systems were above 90%.

Station	Pollutant	Unit	AVG [Conc]	Uptime	Hourly Max [Conc]	Max Date	WS	WD	# Hrs >172 AAAQO	24-Hr Max [Conc]	24-Hr Avg Max Date	# Days >48 AAAQO
PRAMP - Reno	SO ₂	ppb	0	100.0%	2	Apr 1 Hr2	3.2	224 (SW)	0	1	Apr 1	0
	TRS	ppb	0.39	99.9%	2.71	Apr 18 Hr7	3.9	187 (S)	-	0.62	Apr 18	-
	THC	ppm	2.05	100.0%	6.76	Apr 1 Hr6	2.1	197 (SSW)	-	2.71	Apr 1	-
	CH ₄	ppm	2.05	100.0%	6.75	Apr 1 Hr6	2.1	197 (SSW)	-	2.71	Apr 1	-
	NMHC	ppm	0.00	100.0%	0.01	Apr 1 Hr6	2.1	197 (SSW)	-	0.00	Apr 1	-
	WS	kph	0.8	100.0%	19.2	Apr 10 Hr11	19.2	67 (ENE)	-	13.0	Apr 10	-
	WD	degree	213 (SSW)	100.0%	-	-	-	-	-	-	-	-
	RH	%	55	100.0%	92	Apr 14 Hr4	4.1	202 (SSW)	-	85	Apr 17	-
	BP	mbar	939	100.0%	955	Apr 5 Hr10	9.9	357 (N)	-	954	Apr 5	-
	AmbTPX	°C	-0.2	100.0%	21.4	Apr 27 Hr17	3.2	250 (WSW)	-	12.1	Apr 27	-
StnTPX	°C	21.9	100.0%	25.9	Apr 27 Hr17	3.2	250 (WSW)	-	23.2	Apr 27	-	



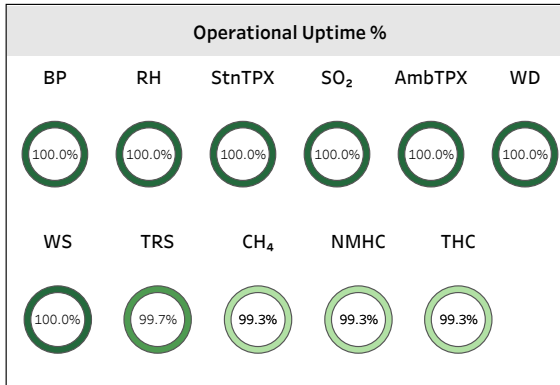
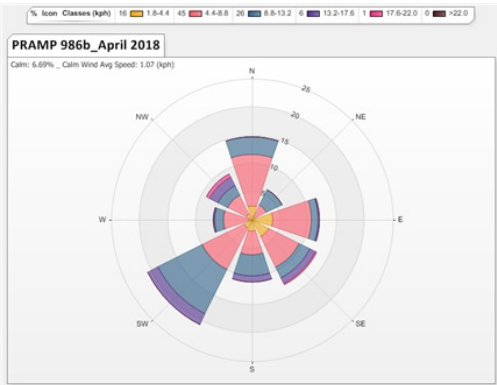
Operational Summary_TRS: Uptime was 99.9% = 1 hr downtime. Additional zero-span check was initiated on Apr 29 to assess span response (-1 hr).



Peace River Area Monitoring Program Committee - 986b Station April 2018 Monthly Report Summary

- All data has been baseline corrected.
- All compliance parameters were within the Alberta Ambient Air Quality Objectives and Guidelines (AAAQO, 2017).
- The operational times for all continuous ambient air analyzers, meteorological systems and data acquisition systems were above 90%.

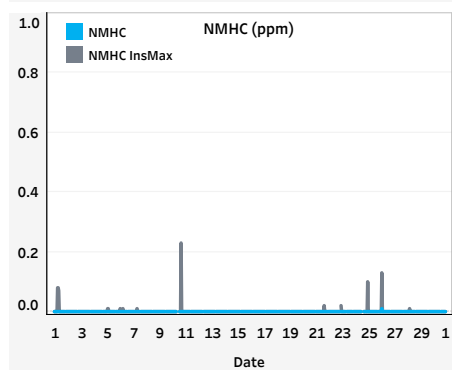
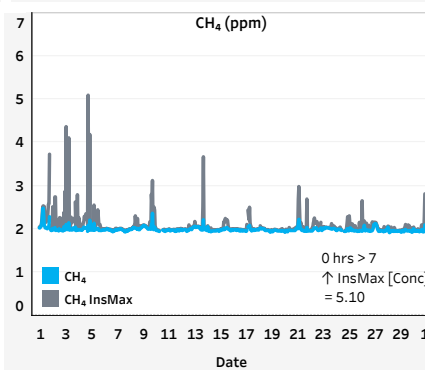
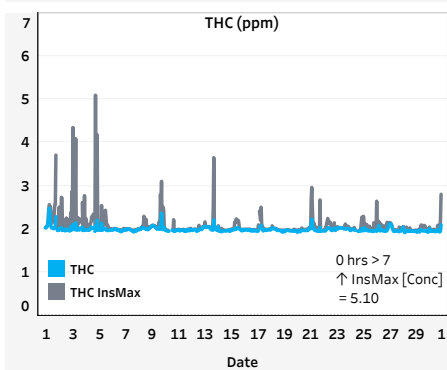
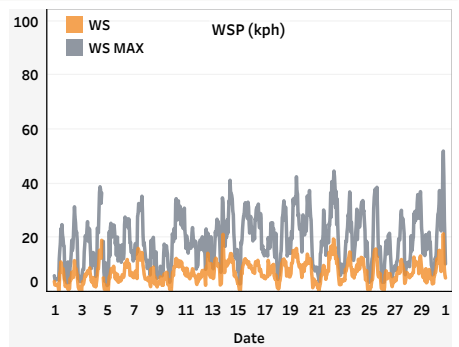
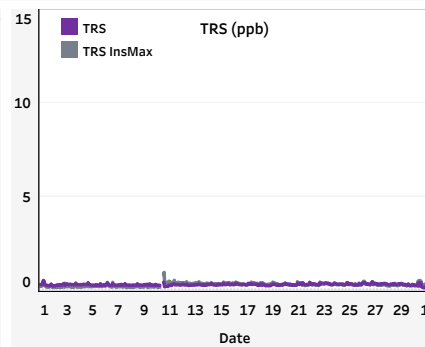
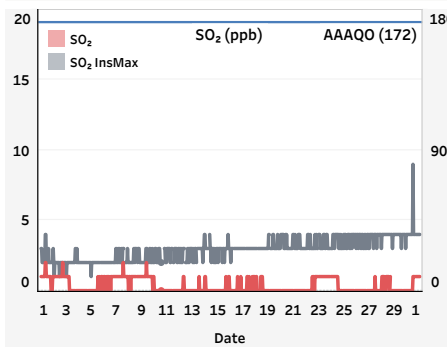
Station	Pollutant	Unit	AVG [Conc]	Uptime	Hourly Max		WS	WD	# Hrs >172 AAAQO	24-Hr Max [Conc]	24-Hr Avg Max Date	# Days >48 AAAQO
					[Conc]	Max Date						
PRAMP - 986b	SO ₂	ppb	0	100.0%	2	Apr 1 Hr8	0.3	331 (NNW)	0	1	Apr 17	0
	TRS	ppb	0.29	99.7%	0.52	Apr 1 Hr7	2.4	116 (ESE)	-	0.35	Apr 26	-
	THC	ppm	1.98	99.3%	2.48	Apr 1 Hr7	2.4	116 (ESE)	-	2.09	Apr 1	-
	CH ₄	ppm	1.98	99.3%	2.48	Apr 1 Hr7	2.4	116 (ESE)	-	2.09	Apr 1	-
	NMHC	ppm	0.00	99.3%	0.01	Apr 26 Hr2	1.0	100 (E)	-	0.00	Apr 1	-
	WS	kph	1.2	100.0%	21.4	Apr 30 Hr19	21.4	325 (NW)	-	10.6	Apr 19	-
	WD	degree	219 (SW)	100.0%	-	-	-	-	-	-	-	-
	RH	%	59	100.0%	99	Apr 16 Hr22	6.0	4 (N)	-	93	Apr 17	-
	BP	mbar	942	100.0%	960	Apr 5 Hr9	8.6	345 (NNW)	-	959	Apr 5	-
	AmbTPX	°C	0.7	100.0%	23.1	Apr 27 Hr16	10.0	215 (SSW)	-	13.9	Apr 27	-
	StnTPX	°C	23.1	100.0%	25.2	Apr 16 Hr6	8.2	355 (N)	-	23.8	Apr 17	-



Canister Events

None Year to Date

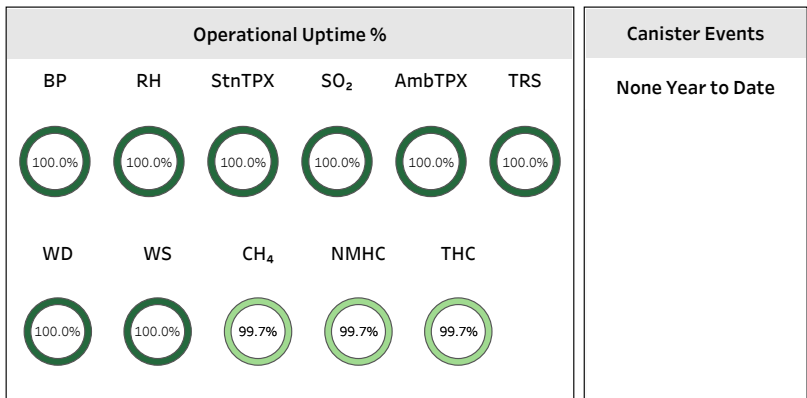
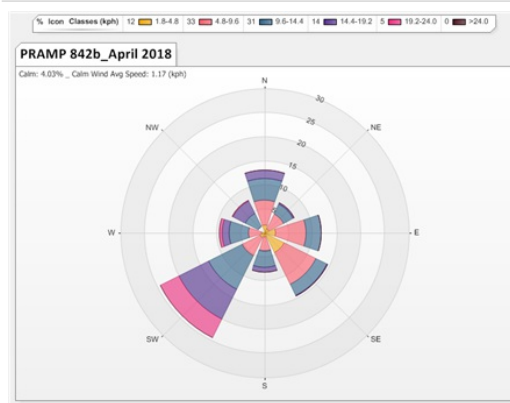
Operational Summary - TRS: Uptime was 99.7% = 2 hrs downtime. As-found response check was performed Apr 30 to address drift in span response (-2 hrs). **THC/CH₄/NMHC:** Uptime was 99.3% = 5 hrs downtime. Sudden span drift on Apr 22. Additional zero-span check on Apr 23 (-1 hr) and repeat calibration on Apr 24 (-4 hrs) to address analyzer performance.



Peace River Area Monitoring Program Committee - 842b Station April 2018 Monthly Report Summary

- All data has been baseline corrected.
- All compliance parameters were within the Alberta Ambient Air Quality Objectives and Guidelines (AAAQO, 2017).
- The operational times for all continuous ambient air analyzers, meteorological systems and data acquisition systems were above 90%.

Station	Pollutant	Unit	AVG [Conc]	Uptime	Hourly Max [Conc]	Max Date	WS	WD	# Hrs >172 AAAQO	24-Hr Max [Conc]	24-Hr Avg Max Date	# Days >48 AAAQO
PRAMP - 842b	SO ₂	ppb	0	100.0%	2	Apr 1 Hr8	1.4	213 (SSW)	0	0	Apr 1	0
	TRS	ppb	0.16	100.0%	0.80	Apr 2 Hr1	1.4	58 (ENE)	-	0.26	Apr 2	-
	THC	ppm	1.98	99.7%	2.21	Apr 27 Hr2	5.2	115 (ESE)	-	2.07	Apr 9	-
	CH ₄	ppm	1.98	99.7%	2.21	Apr 27 Hr2	5.2	115 (ESE)	-	2.07	Apr 9	-
	NMHC	ppm	0.00	99.7%	0.00	Apr 1 Hr0	4.6	135 (SE)	-	0.00	Apr 1	-
	WS	kph	2.7	100.0%	23.9	Apr 19 Hr13	23.9	210 (SSW)	-	15.7	Apr 19	-
	WD	degree	227 (SW)	100.0%	-	-	-	-	-	-	-	-
	RH	%	58	100.0%	95	Apr 17 Hr20	12.2	251 (WSW)	-	92	Apr 17	-
	BP	mbar	943	100.0%	961	Apr 5 Hr13	9.9	359 (N)	-	959	Apr 5	-
	AmbTPX	°C	-0.1	100.0%	21.4	Apr 27 Hr17	15.7	230 (SW)	-	11.9	Apr 28	-
StnTPX	°C	21.8	100.0%	26.6	Apr 28 Hr18	14.8	353 (N)	-	24.1	Apr 28	-	



Operational Summary_THC/CH₄/NMHC: Uptime was 99.7% = 2 hrs downtime. The sample pump was replaced on Apr 11 (-2 hrs).

