



**Peace River Air Monitoring Program  
Three Creeks #986b  
Ambient Air Monitoring Station  
Site Documentation**



## Ambient Air Monitoring Site Documentation Template

<b>1.0</b>	<b>General Information .....</b>	<b>3</b>
1.1	Station .....	3
1.2	Location.....	3
1.3	Owner/Operator/Approval Holder.....	4
<b>2.0</b>	<b>Site Description.....</b>	<b>5</b>
<b>3.0</b>	<b>Instruments .....</b>	<b>6</b>
<b>4.0</b>	<b>Continuous Stations .....</b>	<b>7</b>
4.1	Area Map.....	7
4.2	Plan View Sketch .....	8
4.3	Photographs for Continuous Stations.....	9
<b>5.0</b>	<b>Network Stations .....</b>	<b>12</b>
5.1	Network Area Map .....	12
5.2	Wind Rose (Network Station).....	13

## 1.0 General Information

### 1.1 Station

<b>Station identification/number</b>	986b
<b>Station Name (building name, park name, etc.)</b>	Three Creeks 986b
<b>Date station established</b>	March 18, 2010
<b>Date information last updated</b>	July 21, 2017

### 1.2 Location

<b>Station address (street address/legal land description)</b>	19344 Hwy 986, Northern Sunrise County, AB	
	14-16-85-19, W5M	
<b>Air zone / Airshed zone</b>	PRAMP Airshed	
<b>Latitude</b>	56.376056N	
<b>Longitude</b>	116.940704W	
<b>UTM Coordinates</b>	<b>East:</b> 503662	<b>North:</b> 6247936

#### **DIRECTIONS:**

From Peace River, travel approx. 8 km on Hwy 2 (south) and turn onto Hwy-688 E.

Follow this for 23 km and then turn onto Hwy 986 (east).

The trailer is set back from the road, on the left hand side, 9.6 km from the junction of Hwy-688 and Hwy-986.

### 1.3 Owner/Operator/Approval Holder

<b>Name of operating agency</b>	Maxxam Analytics
<b>Address</b>	#1 2080 39 <sup>th</sup> Ave NE
	Calgary, AB T2E 6P7

<b>Contact name</b>	Christopher Wesson
<b>Title</b>	Senior Project manager, Ambient Air Services
<b>Phone number</b>	Cell: 780 446 2724
<b>Email address</b>	cwesson@maxxam.ca
<b>Contact name</b>	Trina Whitsitt
<b>Title</b>	Supervisor, Ambient Air / Edmonton Air Operations
<b>Phone number</b>	Office: 780408 5309, Cell: 587 337 5880
<b>Email address</b>	twhitsitt@maxxam.ca

<b>Name of owner/approval holder</b>	Peace River Air Monitoring Program
<b>Contact name</b>	Mike Bisaga / Lily Lin
<b>Title</b>	Technical Program Managers
<b>Phone number</b>	(780) 266-7068 / (587) 225-2248
<b>Email address</b>	prampotech@prampairshed.ca

## 2.0 Site Description

<b>Land use by sector (use 90° as a sector)</b>	North: Homestead	
	East: Agricultural	
	South: Agricultural	
	West: Agricultural	
<b>Site elevation (above sea level (m))</b>	610 m	
<b>Angle of elevation to nearby buildings</b>	<b>1. Greatest angle:</b> not applicable	
	<b>2. Building direction:</b> not applicable	
<b>Average building height in the area (m)</b>	No buildings present in immediate area	
<b>Air flow restrictions (yes/no)</b>	<b>North:</b> Yes	<b>South:</b> No
	<b>East:</b> No	<b>West:</b> No
<b>Distance to nearest Obstruction (m)</b>	~12 m (wind system) ~15 m (sample inlet)	
<b>Description of Obstruction</b>	<b>Trees, ~ 10 m in height</b>	
<b>Angle of Elevation (wind system)</b>	0°	
<b>Angle of Elevation (manifold)</b>	22°	
<b>Manifold</b>	<b>1. Type:</b> Stainless Steel / Glass	
	<b>2. Distance from supporting structure:</b> 1 m	
	<b>3. Total Height:</b> 4 m	
<b>Meteorological Tower (Wind System)</b>	<b>1. Type:</b> Aluma Tower	
	<b>2. Distance from Supporting structure:</b> 7 m	
	<b>3. Total Height:</b> 10 m	
	<b>4. Position:</b> Northwest end of station	

Notes:

Other meteorological instruments are mounted on or near the wind tower at approximately roof height (3 m)

### 3.0 Instruments

**Station Name:** Three Creeks #986b

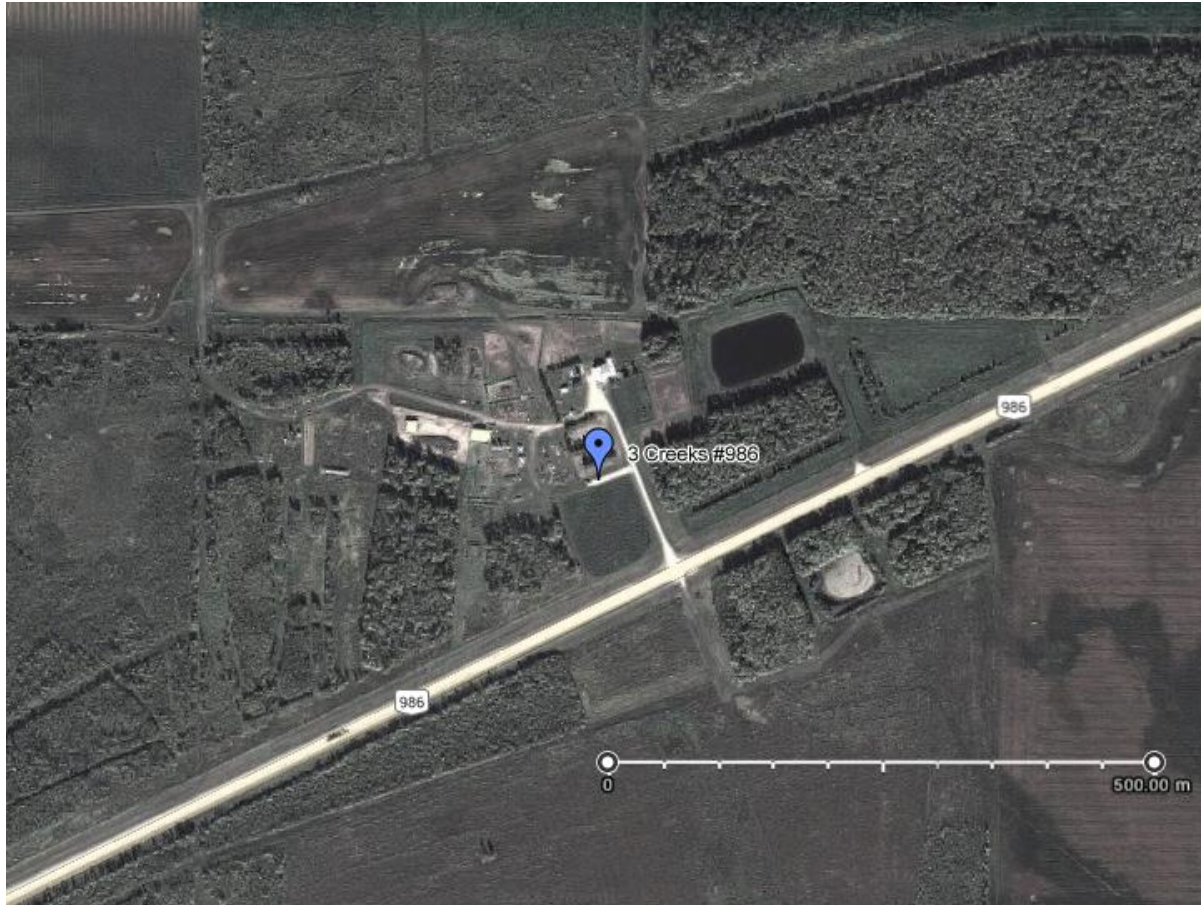
Instrument Type	Owner	Make	Model	Serial No.	Sampling Height (m)	Date Installed
<b>Sulphur dioxide</b>	Maxxam	Thermo	43C	43C-62339-335	4	October 14, 2015
<b>Methane / Non-methane hydrocarbons</b>	Maxxam	Thermo	55i	1022143392	4	October 14, 2015
<b>Total reduced sulphur</b>	Maxxam	Thermo	43i-TLE	1152940011	4	March 7, 2017
<b>TRS Converter</b>	Maxxam	CD Nova	CDN-101	516	n/a	October 14, 2015
<b>Intermittent VOCs</b>	AITF / Maxxam	Suma	6 L Canister	n/a	4	n/a
<b>Wind speed/direction</b>	Maxxam	RM Young	05305VK	129612	10	February 15, 2017
<b>Temperature/RH</b>	Maxxam	RM Young	43172VC	s/n	3	October 14, 2015
<b>Barometric Pressure</b>	Maxxam	Met One	090D	3845	3	October 14, 2015
<b>Data logger</b>	Maxxam	ESC	8832	A4079K	n/a	March 18, 2010

Notes:

VOCs are sampled intermittently. 1-hour samples are triggered based on 5-min average NMHC threshold.

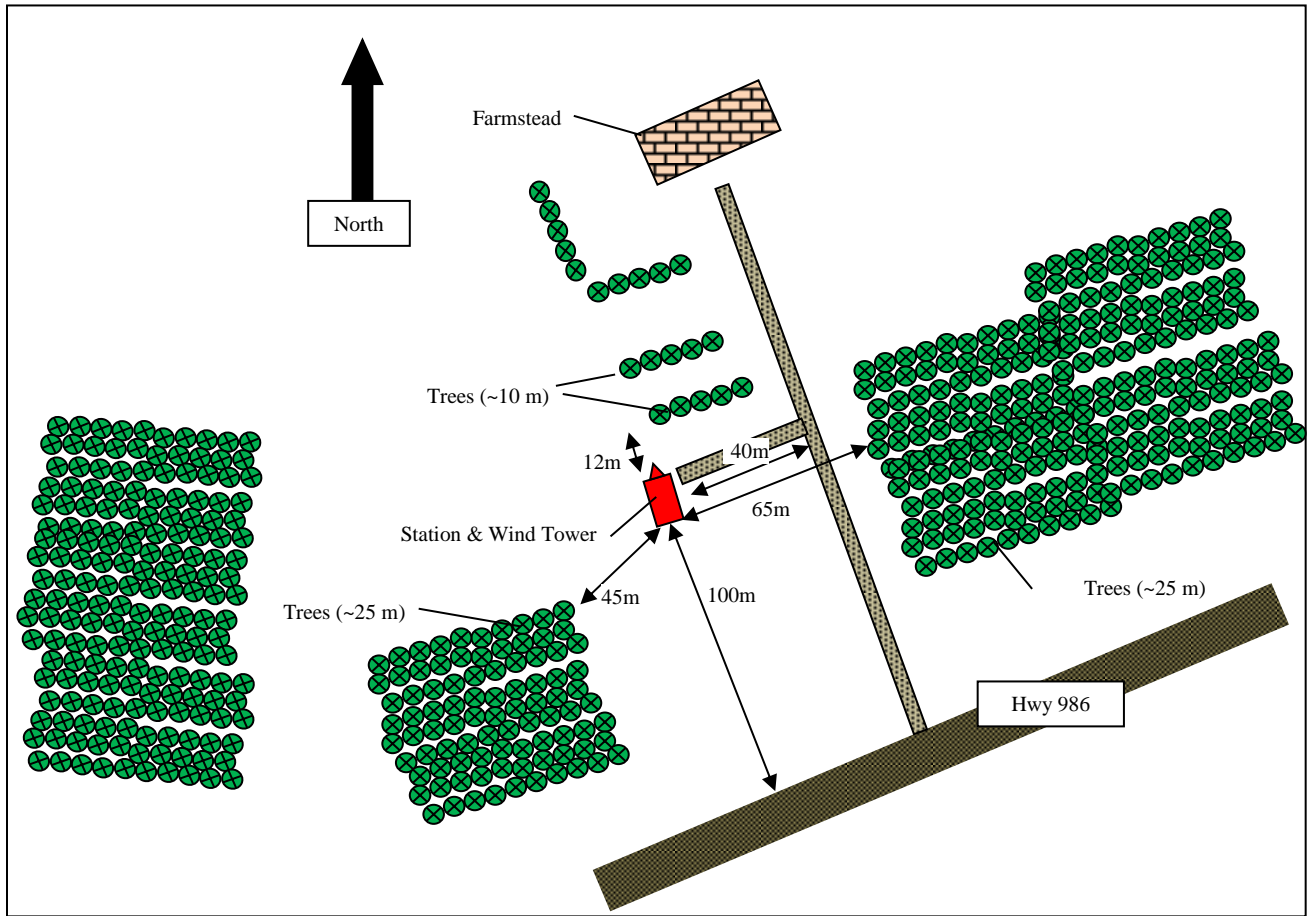
## 4.0 Continuous Stations

### 4.1 Area Map



Source: <http://maps.google.com>  
Retrieved: Sept 2016

## 4.2 Plan View Sketch



Notes:  
Unless otherwise marked, land use is agricultural



### 4.3 Photographs for Continuous Stations

Colour pictures looking from the instrument/manifold:

**North:**



**East:**



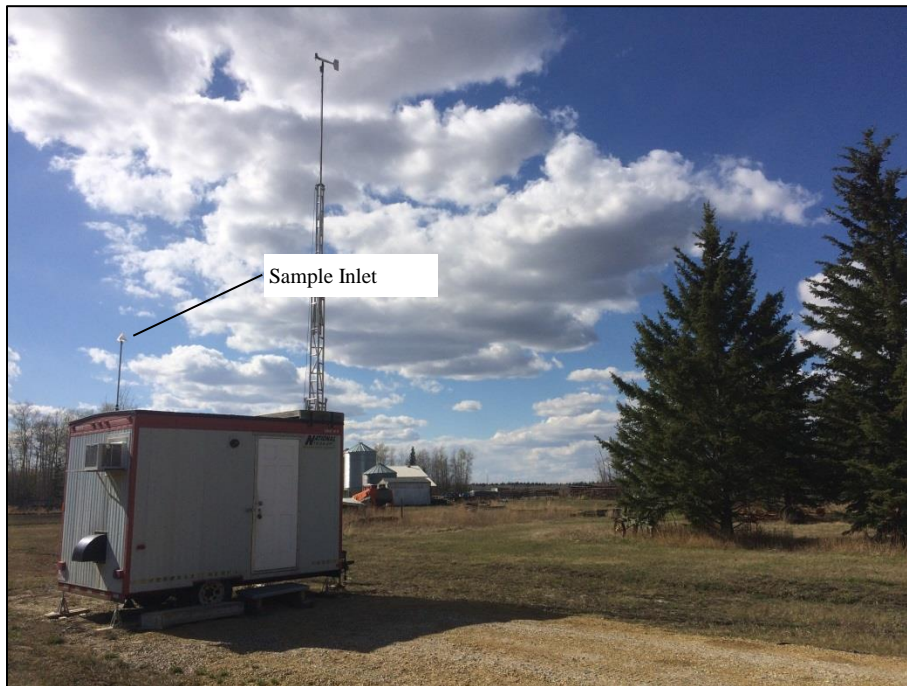
**South:**



**West:**



Colour picture of the structure housing the instruments from the door side / showing the details of the sampling inlet in relation to the station.



Additional photo showing obstructing trees to North Side of Station



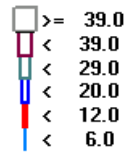
## **5.0 Network Stations**

### **5.1 Network Area Map**

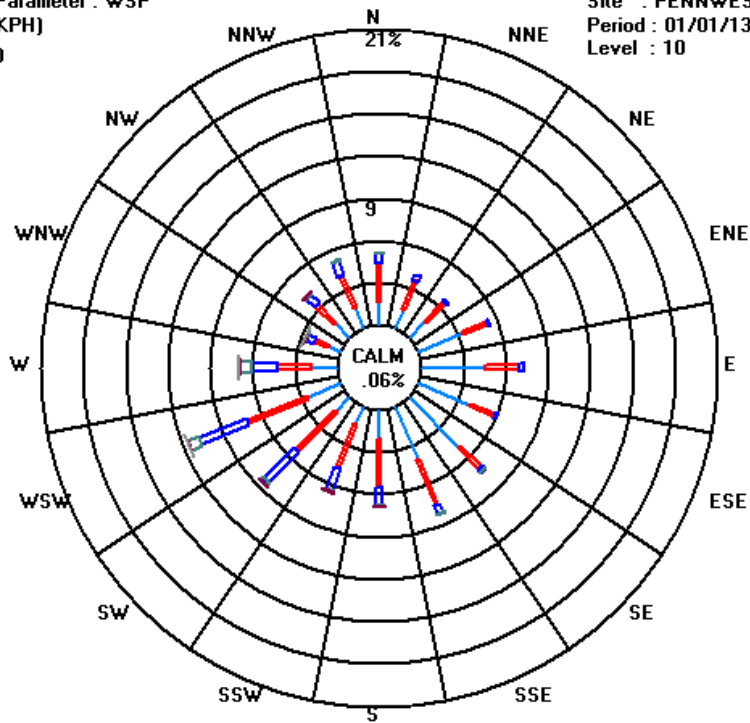
See Appendix 1

## 5.2 Wind Rose

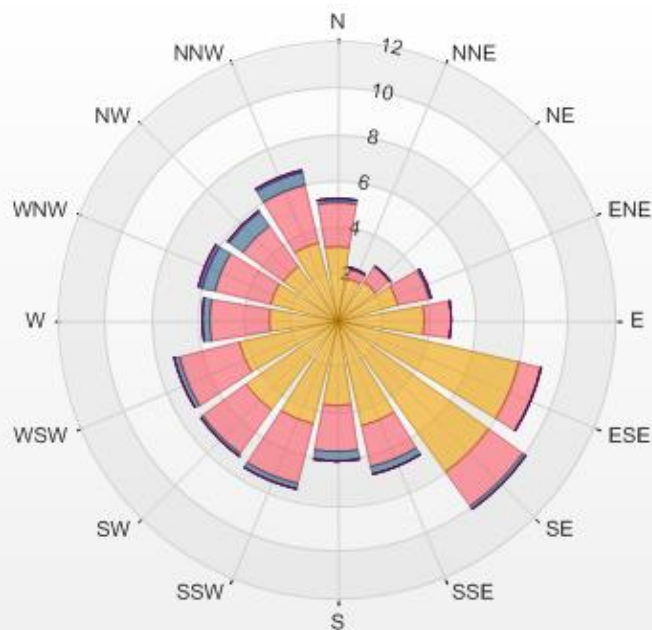
Logger : 80 Parameter : WSP  
Class Limits (KPH)



Site : PENNWEST  
Period : 01/01/13-12/31/14  
Level : 10



PRAMP\_986 2015-01-01 00:00 - 2017-06-30 23:59 Calm: 1.90% Calm Wind Avg Speed: 0.29(kph)



% Icon	Classes (kph)	30	6.5-13.0	0	19.5-26.0	0	26.0-32.5	0	32.5-39.0	0	>39.0
64	0.5-6.5										
4	13.0-19.5										